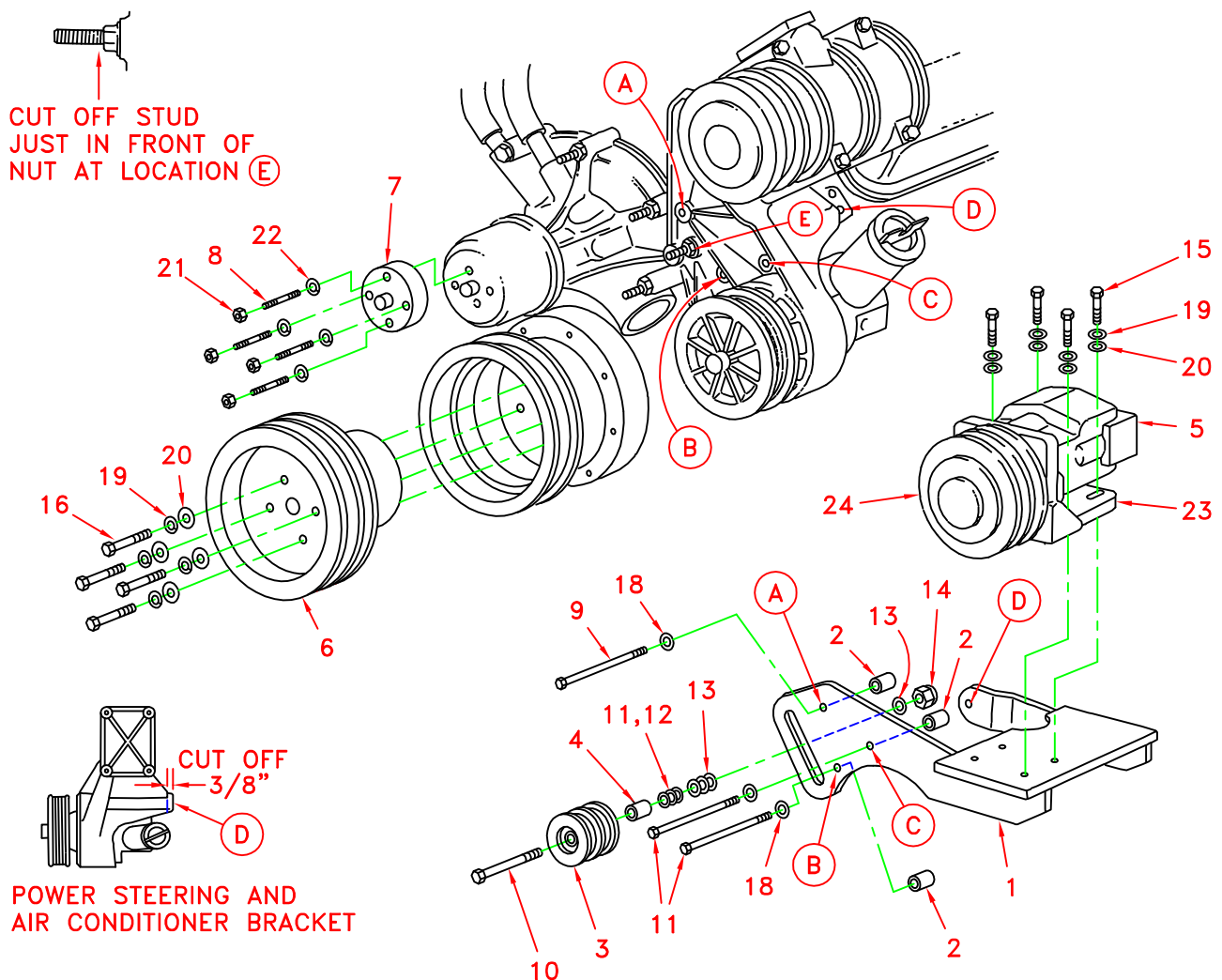


# DEWEZE

710035	Bracket Assy. (Inc. item 1)	Clutch Pump Kit	700030
710477	Bracket Bolt Pkg. (Inc. items 2,9,15,18-20)	Make	Ford
710446	Pulley Bolt Pkg. (Inc. items 16,19,20)	Engine Size	351, 302
710361	Idler Bolt Pkg. (Inc. items 10-14)	Fuel	Gas
700211	Fan Spacer Bolt Pkg. (Inc. item 8,21,22)	Year	1988-94
		Options	EFI, Serp.
		Revised	A 2-1-94

ITEM	QUAN	PART #	DESCRIPTION
1.	1	710035	Pump mounting bracket
2.	3	710225	Spacer, 1.525"
3.	1	740040	Idler Pulley
4.	1	710612	Spacer, 2.00"
5.	1	*	Pump
6.	1	740024	Crankshaft pulley
7.	1	700108	Fan Spacer
8.	4	710345	5/16 X 3 Stud bolts
9.	3	110530	7/16 X 7 1/2 NC bolt
10.	1	110562	5/8 X 4 1/2 NC bolt
11.	2	110668	5/8 Machine bushing (10 ga.)
12.	2	110669	5/8 Machine bushing (14 ga.)
13.	4	110650	5/8 Flat washer
14.	1	110639	5/8 Lock nut
15.	4	110425	3/8 X 1 1/4 NC bolt
16.	4	110533	3/8 X 5 NC bolt
17.	2	740059	V-belt, Gates A63 (351)
	2	740057	V-belt, Gates A61 (302)
18.	3	110671	7/16 Lock washer
19.	8	110672	3/8 Lock washer
20.	8	110676	3/8 Flat washer
21.	4	110608	5/16 NC Nut
22.	4	110674	5/16 Lock washer
23.	1	710353	Footmount
24.	1	740037	Clutch, Standard
	1	740038	Clutch, Heavy duty

\* See Master List for Pump Part No.



(A) Denotes bolt holes in engine to locate corresponding holes in Pump Brkt.

Ford 351, 302  
1988-1993  
Clutch Pump Kit #700030

INSTALLATION INSTRUCTIONS

NOTE: Suction hose to pump must be a wire braid hose; minimum 1" I.D. for 7 and 9 gpm pumps; 1 1/2" I.D. for 12 and 17 gpm pumps. Installations with smaller suction hoses will void the pump warranty.

1. Remove the fan and shroud.
2. Loosen the OEM Belt and remove from air conditioner and power steering.
3. Remove the air intake tube from the inlet to the air cleaner canister. Save for customer.
4. Cut off stud bolt just in front of nut at location (E) for clearance.
5. Remove the OEM bolts from the crankshaft pulley.
6. Install the DewEze crankshaft pulley (6) using four 3/8" X 5" NC bolts (16).  
  
Note: The OEM belt must be in place when this pulley is installed.
7. Remove the OEM stud bolts from the water pump.
8. Install the 5/16" X 3" stud bolts (8) with the short thread end of bolt into the water pump.
9. Slide the Fan Spacer (7) over the stud bolts and secure temporarily with two nuts and flat washers.
10. Remove the two air intake hoses to the engine.
11. Disconnect the air conditioning wire and remove the four mounting bolts from the cast aluminum bracket that holds air conditioner and power steering. Move bracket to side and cut 3/8" off back of bracket at location (D). Replace bracket.
12. Install the DewEze bracket (1) using three 7/16" X 7 1/2" bolts (9) and three 1.525" spacers (2) between bracket and engine.
13. Install the pump (5), clutch (24), and footmount (23) assembly on bracket (1) using four 3/8" X 1 1/4" bolts (15).
14. Install the two V-belts (17).
15. Align clutch pulley with crankshaft pulley using a straight-edge.
16. Install the idler pulley using 5/8" X 4 1/2" bolt (10), 2" spacer (4), and machine bushings and washers (11, 12, 13) as needed to align idler pulley to belts.

17. Install the air conditioner and belt in its original position.
18. Install the air intake tubes back to engine.
19. Start and run the engine checking for installation or alignment problems.
20. Remove the two 5/16" nuts and flat washers holding the fan extension to the water pump.
21. Install the fan and shroud.
22. Start and run engine again checking for alignment and vibrations.
23. Retighten new belts as needed.