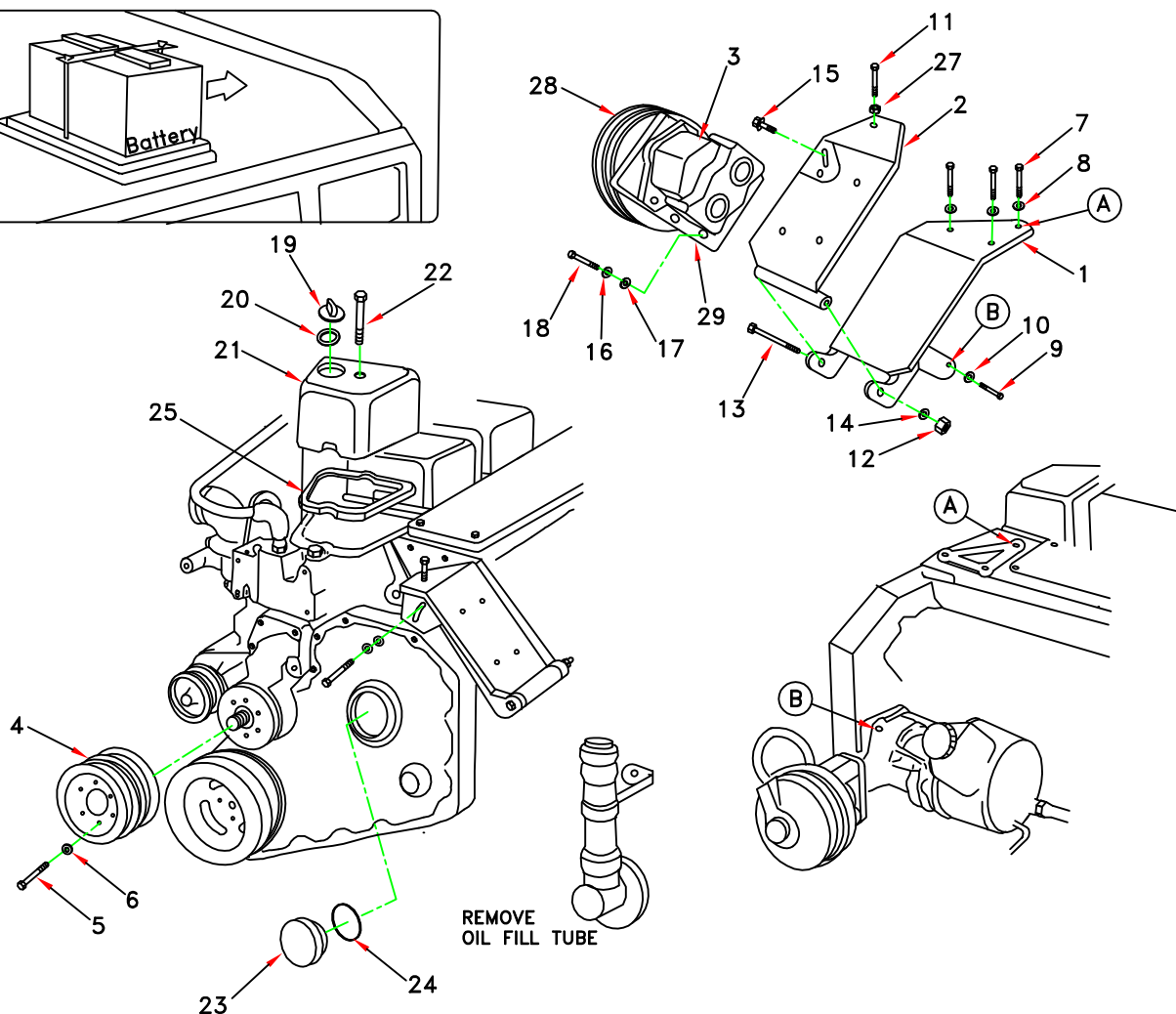
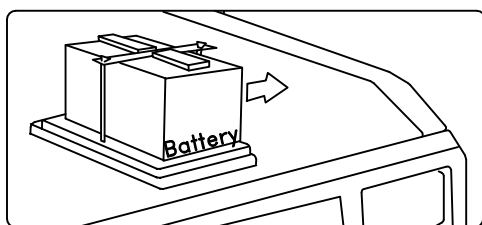


# DewEZE

|        |  |                 |           |
|--------|--|-----------------|-----------|
| 710038 | Bracket Assy. (Inc. items 1,2)         | Clutch Pump Kit | 700042    |
| 710488 | Bracket Bolt Pkg. (Inc. items 7-18,27) | Make            | Dodge     |
| 710450 | Pulley Bolt Pkg. (Inc. items 5,6)      | Engine Size     | 5.9L      |
| NONE   | Fan Spacer Bolt Pkg.                   | Fuel            | Diesel    |
|        |  | Year            | 1989-91.5 |
|        |  | Options         |           |
|        |  | Revised         | 10-7-93   |

| ITEM | QUAN | PART # | DESCRIPTION                 |
|------|------|--------|-----------------------------|
| 1.   | 1    | 710105 | Pump Mounting Bracket       |
| 2.   | 1    | 710109 | Pump Mounting Bracket       |
| 3.   | 1    | *      | Pump                        |
| 4.   | 1    | 740036 | Crankshaft Pulley           |
| 5.   | 6    | 710381 | 6mm X 16mm X 1 GR 10.9 Bolt |
| 6.   | 6    | 110677 | 1/4" Lock Washer            |
| 7.   | 3    | 110479 | 10mm X 30mm X 1.5 Bolt      |
| 8.   | 3    | 110671 | 7/16" Lock Washer           |
| 9.   | 1    | 110577 | 12mm X 45mm X1.75 Bolt      |
| 10.  | 1    | 110658 | 1/2" Flat Washer            |
| 11.  | 1    | 110553 | 1/2" X 2 1/2"NC Tap Bolt    |
| 12.  | 1    | 110610 | 1/2"NC Nut                  |
| 14.  | 2    | 110405 | 1/2" Lock Washer            |
| 15.  | 1    | 110437 | 3/8" X 3/4"NC Wiz Bolt      |
| 16.  | 4    | 110672 | 3/8" Lock Washer            |
| 17.  | 4    | 110676 | 3/8" Flat Washer            |
| 18.  | 4    | 110425 | 3/8" X 1 1/4"NC Bolt        |
| 19.  | 1    | OEM    | Oil Fill Cap                |
| 20.  | 1    | OEM    | Gasket                      |
| 21.  | 1    | 710379 | Valve Cover                 |
| 22.  | 1    | OEM    | Bolt                        |
| 23.  | 1    | 710380 | Cover, Fill Tube            |
| 24.  | 1    | OEM    | O-Ring                      |
| 25.  | 1    | OEM    | Gasket                      |
| 26.  | 2    | 740050 | V-Belts, A50 W/Std.Clutch   |
|      |      | 740127 | V-Belts, A49 W/H.D.Clutch   |
| 27.  | 1    | 110642 | 1/2"NC Jam Nut              |
| 28.  | 1    | 740037 | Clutch, Standard            |
|      |      | 740038 | Clutch, Heavy Duty          |
| 29.  | 1    | 710353 | Footmount                   |

\* See Master List for Pump Part No.



Ⓐ Denotes bolt holes in engine to locate corresponding holes in Pump Brkt.

Dodge - 5.9L Diesel  
1989-1991.5  
Clutch Pump Kit # 700042

INSTALLATION INSTRUCTIONS

NOTE: Suction hose to pump must be wire braid hose; minimum 1" I.D. for 7 & 9 gpm pumps; 1 1/4 " I.D. for 12 & 17 gpm pumps. Installations with smaller suction hoses will void the pump warranty.

1. Remove fan and shroud.
2. Loosen OEM belt.
3. Remove OEM pulley above the crankshaft pulley.
4. Install DewEze pulley (4).
5. Remove OEM fill tube from the front of the engine. Save O-ring(24).
6. Place O-ring (24) inside fill tube cover (23). Screw cover into hole.
7. Remove OEM front valve cover. Save gasket (25) and keep in place. Install new valve cover (21), supplied in DewEze Kit, using OEM bolt (22).
8. Place gasket (20) onto OEM oil filler cap (19) and screw into valve cover.
9. Loosen the battery hold-down bracket and move battery toward fender as far as possible to allow clearance for the clutch pulley.

NOTE: Hold-down bracket needs to be shortened and another hole drilled to allow battery to move far enough.

10. Install bracket (1) on engine. Tighten bolts.
11. Install bracket (2) onto bracket (1).
12. Install clutch (28) onto pump (3). Install pump and clutch onto bracket (2). Do not tighten bolts yet.
13. Align the clutch pulley and drive pulley (4) by placing a straight edge across the front surface of both pulleys. Tighten the four pump mounting bolts (18).
14. Install two V-Belts, A50 with standard clutch or A49 with heavy duty clutch.
15. Thread jam nut (27) onto bolt (11) and screw bolt into bracket (2) until V-Belts are tight.
16. Start and run engine, checking for vibration or alignment problems.
17. Trim away fan shroud as needed to allow clearance for clutch pulley.
18. Install fan and fan shroud.
19. Run engine, checking for clearance, vibration and alignment.

—