

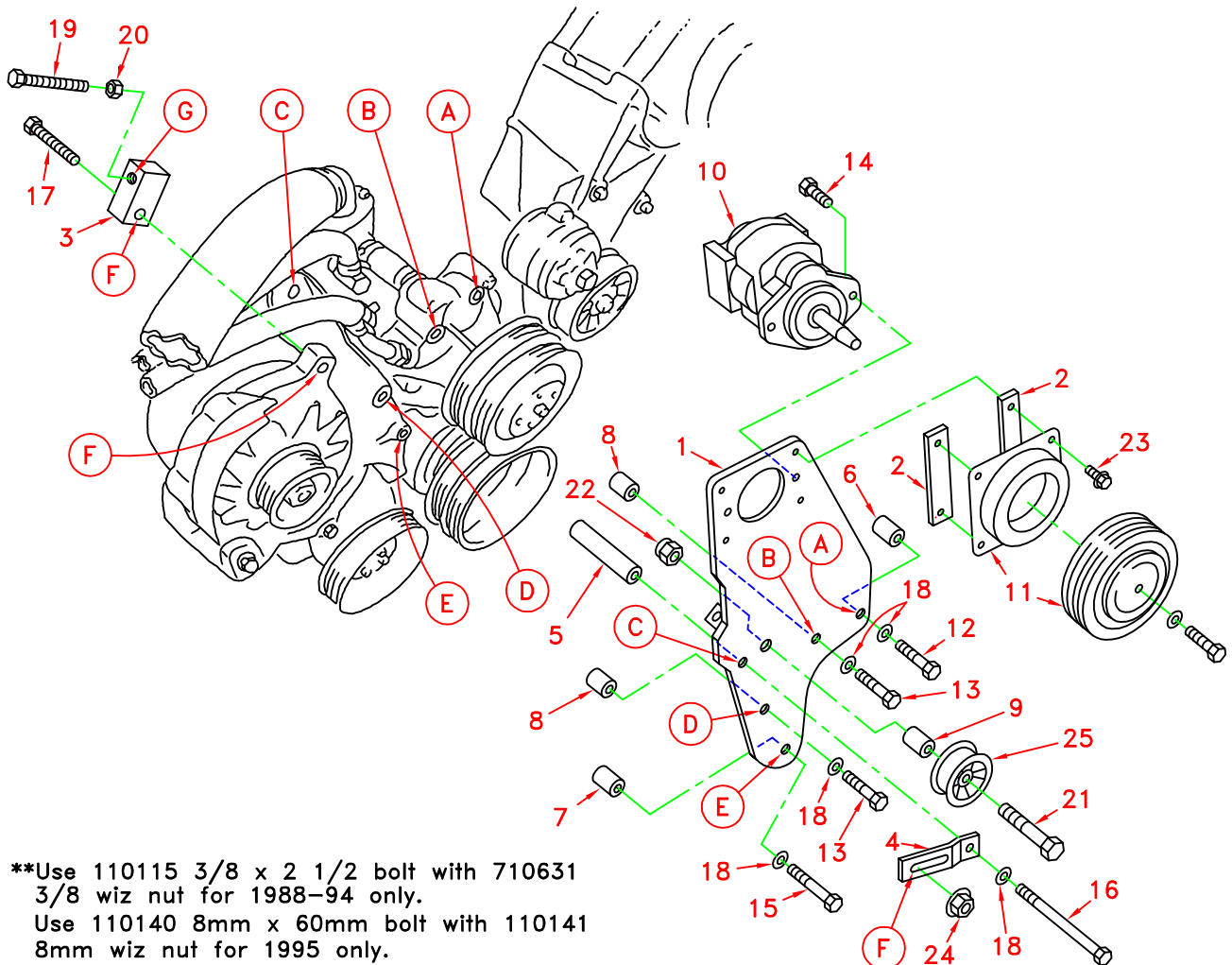
DEWEZE CLUTCH PUMP KIT

710058	Bracket Assy. (Inc. items 1-4)		Kit No.	700075
710893	Bracket Bolt Pkg. (Inc. items 5-8,12-20,23,24)		Make	Ford
None	Pulley Bolt Pkg.		Engine	460
710894	Idler Bolt Pkg. (Inc. items 9,21,22)		Fuel	Gas
None	Fan Spacer Bolt Pkg.		Year	1988-97
			Options	
			Revised	C 9-29-94

WARNING: This kit is rated for use with a pump of 9 GPM maximum at 2700 PSI. Use of a larger pump will void all warranties.

ITEM	PART #	DESCRIPTION			
1.	710882	Engine bracket	15.	110494	3/8 x 3 1/4 NC Bolt
2.	710881	Coil spacer	16.	110016	3/8 x 6 3/4 NC Bolt
3.	710885	Take-up block	**17.	110115	3/8 x 2 1/2 NC Tap bolt
4.	710886	Alternator hanger		110140	8mm x 60mm x 1.25 Tap bolt
5.	710887	Spacer 4.450"	18.	110672	3/8 Lock washer
6.	710888	Spacer .965"	19.	110424	1/2 x 4 NC Tap bolt
7.	710889	Spacer .900"	20.	110642	1/2 NC Jam nut
8.	710890	Spacer .500"	21.	110477	5/8 x 3 NC Bolt
9.	710891	Idler spacer 1.187"	22.	110639	5/8 NC Lock nut
10.	*	Pump	23.	110468	1/4 x 3/4 Wiz bolt
11.	740144	Clutch	**24.	110645	3/8 NC Wiz nut
12.	110400	3/8 x 2 NC Bolt		110141	8mm x 1.25 Wiz nut
13.	110493	3/8 x 2 1/4 NC Bolt	25.	740145	Idler pulley
14.	110420	3/8 x 1 NC Bolt	26.	740146	Serpentine belt

* See Master List for Pump Part No.

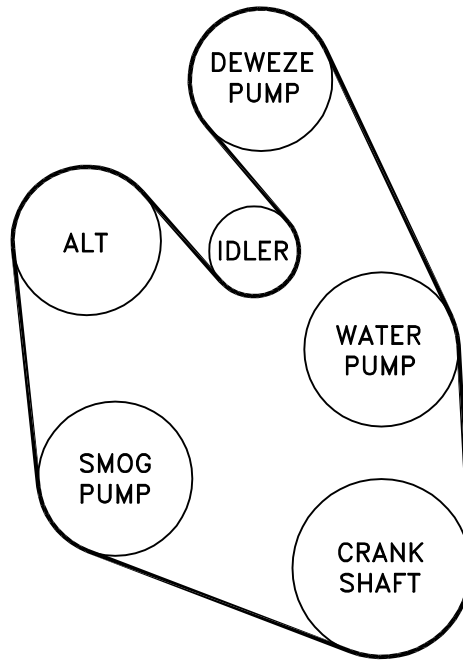


**Use 110115 3/8 x 2 1/2 bolt with 710631 3/8 wiz nut for 1988-94 only.
Use 110140 8mm x 60mm bolt with 110141 8mm wiz nut for 1995 only.

(A) Denotes bolt holes in engine to locate corresponding holes in Pump Brkt.

FIG. 2

BELT DIAGRAM



DewEze

Clutch Pump Kit
#700075
Ford 460 (7.5L)
1988-97

INSTALLATION INSTRUCTIONS

WARNING: This kit is rated for use with a pump of 9 GPM maximum at 2700 PSI. Use of a larger pump will void all warranties.

Suction hose to pump must be a wire braid hose with a minimum of 1" I.D. for 7 & 9 GPM pumps. Installations with smaller suction hoses will void the pump warranty.

1. Remove OEM bracket from top of alternator. Remove OEM serpentine belt.
2. Install engine bracket (1) placing spacers between bracket and engine and using bolts as follows:
Hole A: Bolt (12) and lock washer (18) with .965" spacer.
Hole B: Bolt (13) and lock washer (18) with .500" spacer.
Hole C: Place alternator hanger bracket (4) on front of engine bracket using bolt (16) and lock washer (18) with 4.450" spacer behind engine bracket.
Hole D: Bolt (13) and lock washer (18) with .500" spacer.
Hole E: Bolt (15) and lock washer (18) with .900" spacer.
3. Install idler pulley (25) at .625" hole placing 1.187" spacer (9) between idler and bracket using bolt (21) and lock nut (22).
4. Install take-up block (3) on back side of Hole F on top of alternator placing bolt (17) through block, alternator, and slot in alternator hanger bracket using wiz flange nut (24).
NOTE: Use the 3/8 x 2 1/2 bolt with 3/8 nut on 1988-94 trucks. Use the 8mm x 60mm bolt with 8mm nut on 1995 trucks.
5. Place jam nut (20) onto bolt (19) and thread into take-up block at Hole G.
6. Install pump (10) onto back side of engine bracket using two bolts (14). Install clutch coil (11) onto front of engine bracket placing two coil spacers (2) between coil and bracket using four wiz flange bolts (23). Install clutch pulley (11) onto pump shaft.
7. Place new serpentine belt (26) onto pulleys. Tighten belt by screwing in bolt (19) into take-up block. Tighten jam nut (20) onto block.
8. Run the engine and check for clearance, alignment, and vibration problems. Adjust if needed. Retighten belt if needed.

□