

DewEze CLUTCH PUMP KIT

710059	Bracket Assy. (Inc. item 1)		Kit No.	700080
710895	Bracket Bolt Pkg. (Inc. items 13-15, 27-37, 44)		Make	Ford
None	Pulley Bolt Pkg.		Engine	7.3L Dir. Inj.
710896	Idler Bolt Pkg./Serp (Inc. items 12,16)		Fuel	Diesel
710897	Idler Bolt Pkg./Flat (Inc. items 11,17-19)		Year	1995
None	Fan Spacer Bolt Pkg.		Options	Turbo
			Revised	F 3-4-99

ITEM	PART #	DESCRIPTION			
1.	710059	Engine bracket			
2.	700111	Alternator bracket			
3.	740166	Crankshaft pulley			
4.	700118	Water pump pulley			
5.	*	Pump			
6.	740148	Clutch/serpentine			
7.	710353	Foot mount			
8.	740273	Tensioner arm			
9.	740157	Idler pulley/serp .625 I.D.			
10.	740151	Idler pulley/flat			
11.	711211	Spacer/1.000 O.D. x .438 I.D. x 1.000 long			
12.	710900	Spacer/1.125 O.D. x .625 I.D. x .563 long			
13.	110425	3/8NC x 1 1/4 Bolt			
14.	110672	3/8 Lock washer			
15.	110676	5/8 Flat washer			
16.	710910	5/8NC x 2 1/4 Bolt shored head			
17.	110242	7/16NC x 2 1/4 LH Bolt			
18.	110241	1/2NC x 4 Flange Bolt			
19.	110588	1/2NC Wiz flange nut			
20.	120075	1/2 Street all 45°			
21.	220115	1/2 x 3/8 Bushing			
22.	OEM	Hose barb			
23.	740158	Idler pulley/serp .50 I.D.			
24.	740150	Serpentine belt			
25.	720123	1" Street all 45°.....5.7,9 6PM			
26.	120076	1 1/4" Street all 45°.....12,17 6PM			
27.	120077	3/8" Street all 45°.....5.7 6PM			
28.	720104	See Item 20.....9 6PM			
29.	710987	3/4" Street all 45°.....12,17 6PM			
	120083	Link/extension			
	720107	Hose splice			
		Hose clamp			
30.	200020	Adel clamp			
31.	120084	Hose elbow			
32.	110464	1/4NC x 1 Bolt			
33.	110673	1/4 Flat washer			
34.	110667	1/4 Lock washer			
35.	110609	1/4NC Nut			
36.	110630	1/4NC Lock nut			
37.	710587	3/16 x 3/4 Self-tip screw			
38.	OEM	Stud			
39.	OEM	Bolt			
40.	OEM	Bolt			
41.	OEM	Bolt			
42.	OEM	Nut			
43.	OEM	Nut			
44.	700212	Hose/coolant tank			
45.	-----	Wire tie			

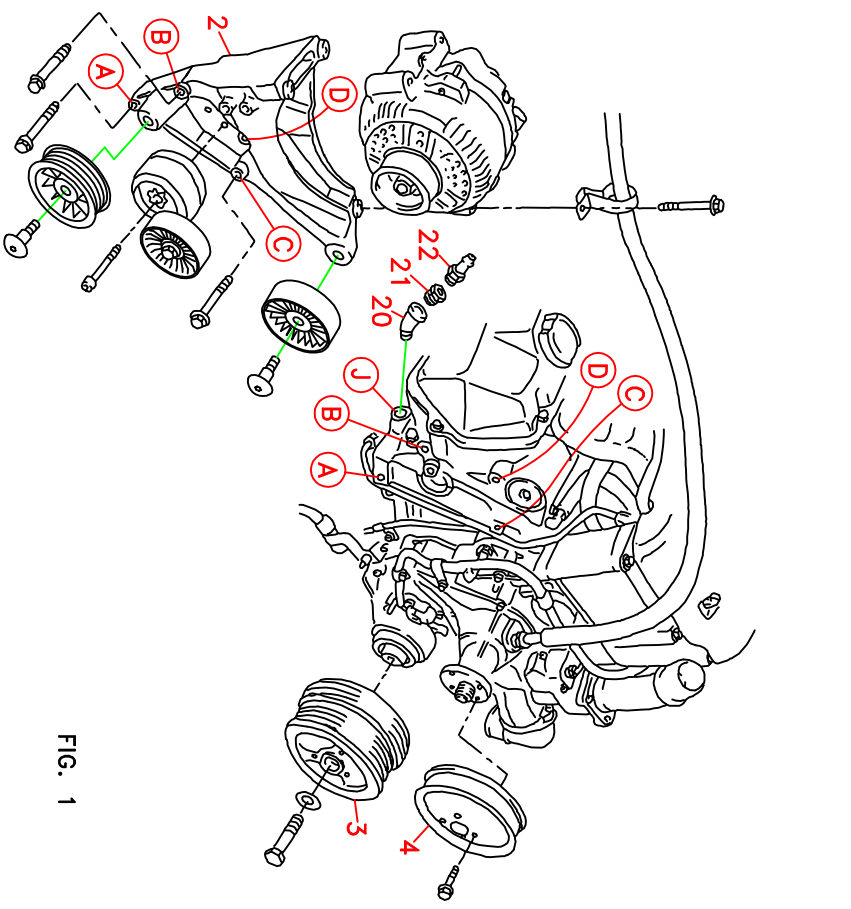
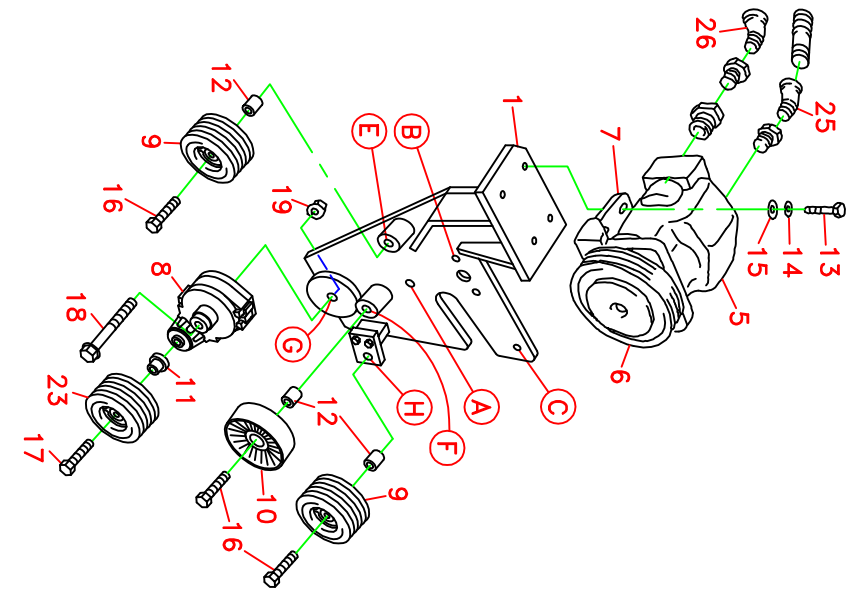


FIG. 1

* See Master List for Pump Part No.

(A) Denotes bolt holes in engine to locate corresponding holes in Pump Brkt. Bolts without an item No. are Ford OEM bolts that are reused in their original location.

BELT INSTALLATION
FIG. 2

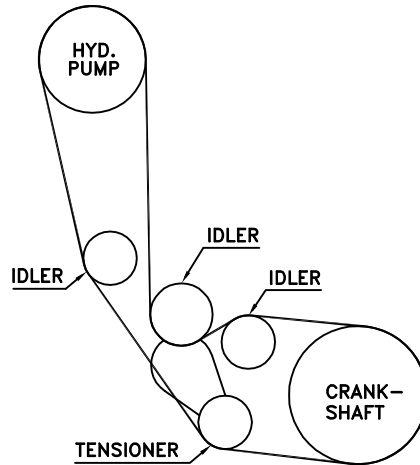


FIG. 3

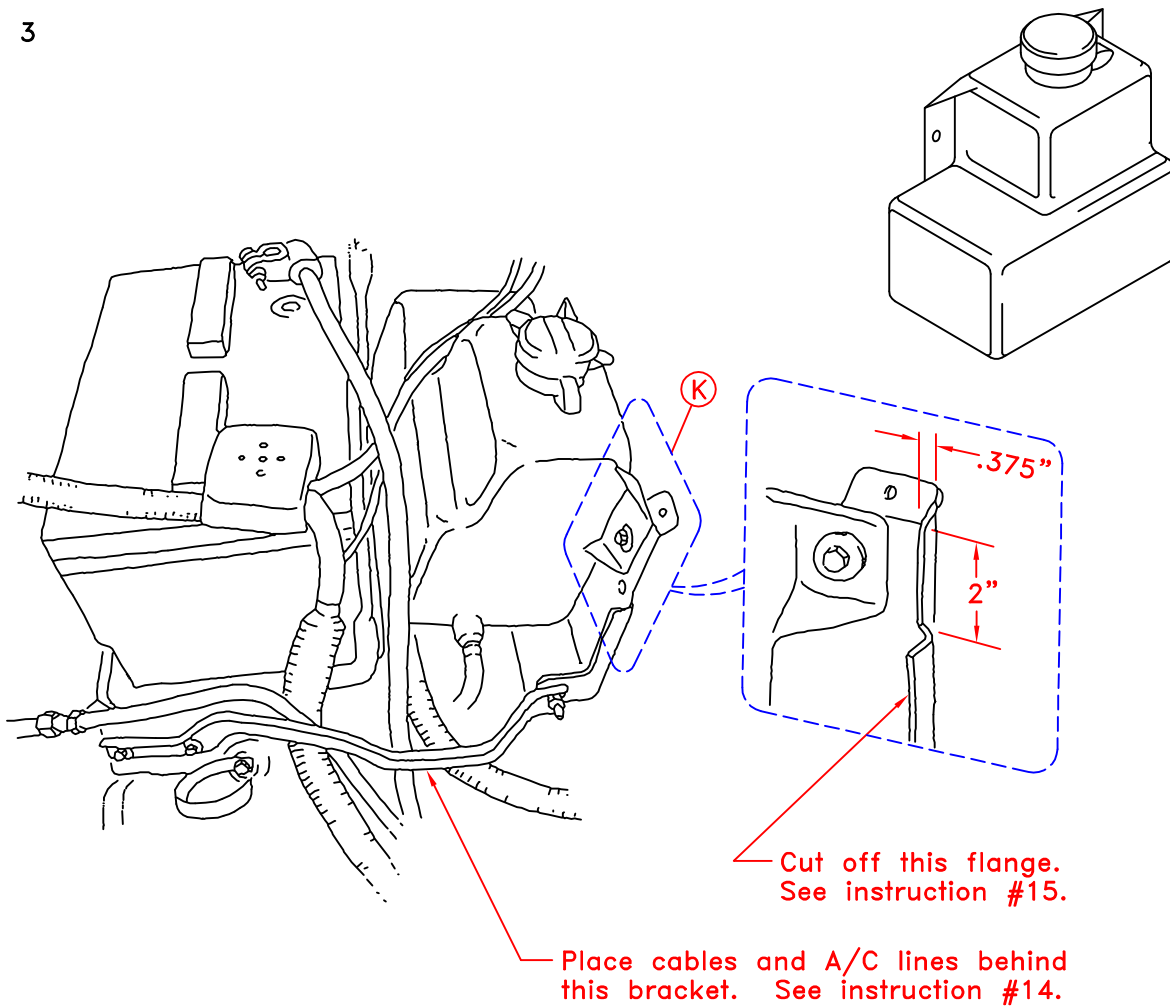


FIG. 5

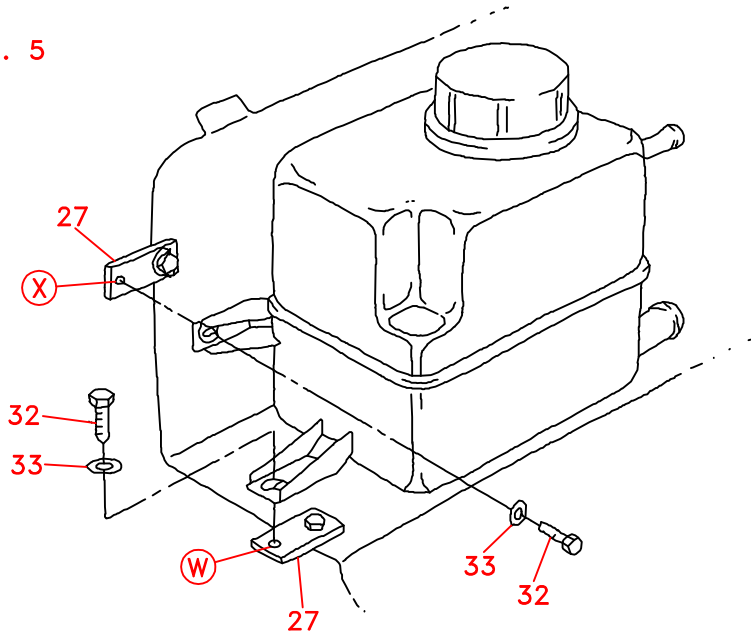
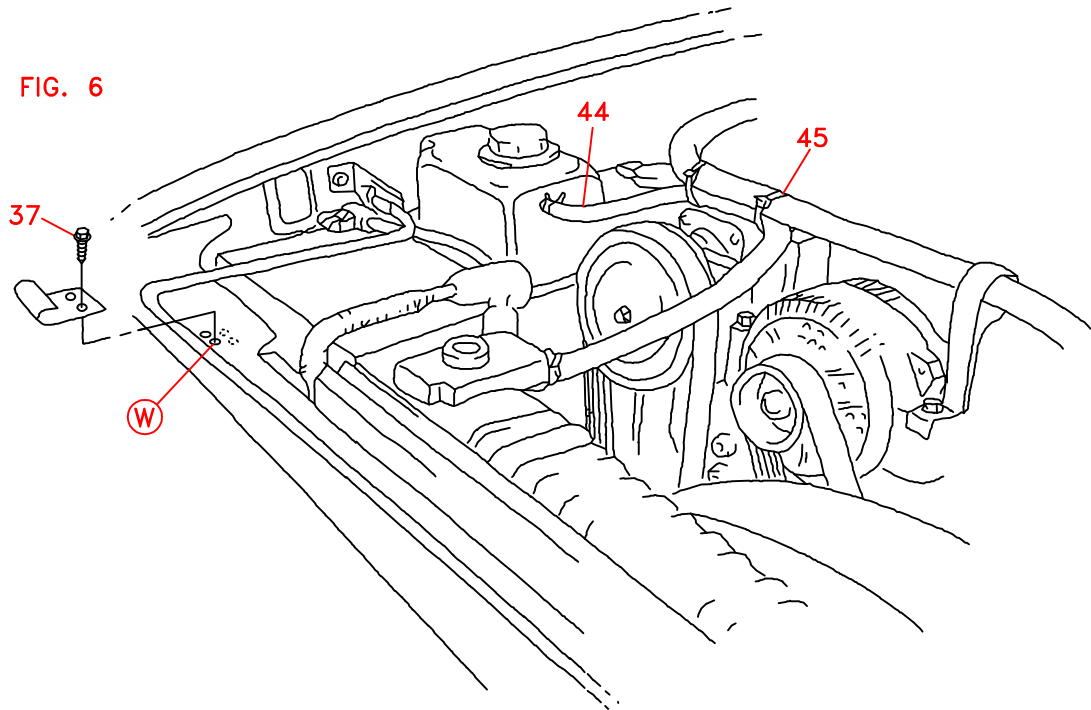


FIG. 6



INSTALLATION INSTRUCTIONS

NOTE: Suction hose to pump must be a wire braid hose; minimum 1" I.D. for 7 & 9 GPM pumps, 1 1/4" I.D. for 12 & 17 GPM pumps. Installations with smaller suction hoses will void the pump warranty.

NOTE: If your radiator coolant tank is shaped like the tank in Fig. 3, skip items 1-12 and do item 13. If your coolant tank is shaped like Fig. 5, do items 1-12 skipping item 13.

1. Refer to Fig. 4a. Remove jack handle. Remove battery. Disconnect hoses to coolant tank and washer fluid tank. Remove coolant tank by unscrewing three bolts. Remove washer fluid tank by unscrewing two bolts. Remove brace that goes from battery mounting tray to radiator coolant tank bracket by unscrewing two bolts at location P and one nut at location Q. Remove battery tray, coolant tank bracket and jacket handle clip by unscrewing bolts at location L, M and N.
2. Knock out OEM stud bolt (38) from coolant tank bracket at location R. Bolt on extension link (27) at location R using 1/4 x 1 bolt (32) through untapped hole in link and 1/4 nut (36). Bolt on other link (27) at location S using OEM bolt (39) through untapped hole in link.
3. Refer to Fig. 5. Install coolant tank using 1/4 x 1 bolt (32) and 1/4 flat washer (33) into tapped holes in link at locations W and X. Hold a piece of cardboard under tank to make sure there is clearance between tank and bolt head at location R. Tighten bolts. Remove cardboard.
4. Refer to Fig. 4a. Drill a new .265 hole in coolant tank bracket at location U using hole in tank mounting tab as a guide to drill through. Place 1/4 x 1 bolt (32) through this hole in back side of bracket into tank tab. Fasten with 1/4 flat washer (33) and 1/4 lock nut (36).
5. Place three 1/4 flat washers on each stud bolt at location V back side of tank bracket that mounts washer fluid tank. Slide washer fluid tank onto studs and fasten with OEM nuts (42).
6. Install battery tray/tank bracket back in truck using four OEM bolts (39, 40) at location L and M. If brace at location Z is a flattened hollow tube, fasten it back in its original location (N) with OEM bolt. Place jack handle clip on the hole in front of the brace at location O with 1/4 x 1 bolt (32) and 1/4 flat washer (33). Fasten bolt with 1/4 flat washer (33), 1/4 lock washer (34) and 1/4 nut (35) by inserting through rectangular cut out in inner fender. See Fig. 4b. If brace at location Z is a flat strap, place jack handle clip on top of brace and insert 1/4 x 1 bolt (32) through clip, brace and into inner fender at location O. Fasten bolt with 1/4 flat washer (33), 1/4 lock washer (34) and 1/4 nut (35) by inserting through rectangular cut out in inner fender. See Fig. 4a.
7. Install brace running from battery tray mount to coolant tank bracket, placing battery cables, alternator cable and air conditioner line under brace with one bolt (41) in front end of brace and one nut (43) at location Q. Do not install bolt at location P yet.
8. Inset hose splice (28) into hose elbow (31) and fasten with clamp (29). Place other end of elbow onto bottom outlet on coolant tank with clamp (29).
9. Place Adel clamp (30) onto OEM radiator hose as shown. Place OEM bolt through clamp and onto brace at location P.
10. Push OEM radiator hose onto hose splice using OEM hose clamp.
11. Install one end of 3/8" hose (44) onto top outlet on coolant tank and connect other end to top of radiator using OEM hose clamps. Tie hose to heater hose on top of hydraulic pump using two wire ties (45). See Fig. 6.

12. Drill out rivets holding jack handle clip in front of battery on passenger side. Remove clip. Snap jack handle into clips behind battery and on driver side. Reverse clip so it is facing opposite than the way you removed it and snap it onto jack handle covering holes that it was mounted in. Drive self-tapping screws (37) through holes in clip and into truck. See Fig. 6.
13. Refer to Fig. 3. Remove brace that goes from battery mounting tray to radiator coolant bottle by unscrewing two bolts and one nut. Reattach bracket and place positive and negative battery cables, air conditioning line and cable to alternator beneath bracket. This holds the line and cables away from idler pulleys.
14. If radiator coolant bottle mounting bracket is not notched as shown at location K in Fig. 3, the outer flange needs to be cut off 2" from top to give clearance for the pump mounting bracket.
15. Remove fan and fan shroud.
16. Remove 3 bolts holding alternator on bracket. Move alternator back out of the way.
17. Take off alternator mounting bracket by removing 4 bolts at locations A, B, C and D.
18. Remove heater hose from OEM fitting in engine block at location J. Cut 7" from this end of hose. Remove OEM hose barb and fitting in block. Install 45° street ell (20), bushing (21) and OEM hose barb. Replace hose using OEM hose clamp.
19. Hold DewEze pump bracket (1) in place, put DewEze alternator bracket (2) on top of that and secure with OEM bolts.
20. Replace alternator and hose holder onto bracket using OEM bolts.
21. Remove center bolt and flat washer from damper. Use gear puller to remove damper from crankshaft. Replace with DewEze crankshaft pulley (3). Put silicone on the OEM flat washer on the side toward the pulley and replace it and the OEM bolt. The timing mark indicator needs to be bent out away from the pulley for clearance.
NOTE: TORQUE CENTER BOLT OF DAMPER TO 220FT/LBS.
22. Unscrew 4 bolts from water pump pulley and remove pulley, replace with DewEze pulley (4) using the OEM bolts.
23. Insert bushing with shoulder (11) into back side (side opposite snap ring) of the 1/2" I.D. serpentine idler pulley (23). Push 7/16 x 2-1/4 bolt LH bolt (17) through front of pulley and bushing and thread into the tensioner arm (8). Position arm on bracket at location G with arm pointing down at about the 6:30 position using 1/2 x 4 bolt (18) and 1/2" w/z flange nut (19) on back side of bracket (1).
24. Make two idler assemblies by inserting 5/8 x 2-1/4 bolt (16) through serpentine idler pulley (9) with 5/8" I.D. and through 9/16" long spacer (12). Mount one idler at location E and the other at location H.
25. Insert 5/8 x 2-1/4 bolt (16) through flat idler (10) and through .563" long spacer (12). Thread bolt into bracket at location F.
26. Assemble pump (5) onto foot mount (7) and clutch (6) onto pump. Attach pump assembly onto top plate of pump mounting bracket with four 3/8 x 1-1/4 bolts (13) and lock (14) and flat (15) washers.
27. Install the serpentine belt (24). Refer to Fig. 2 for belt wrap diagram.
28. Run the engine and check for clearance, alignment and vibration problems. Adjust as needed.
29. Replace the fan and fan shroud.

CAUTION: Tie down hydraulic hoses so they are clear of the air conditioner lines. The hoses will wear through the A/C lines if they contact.

700080