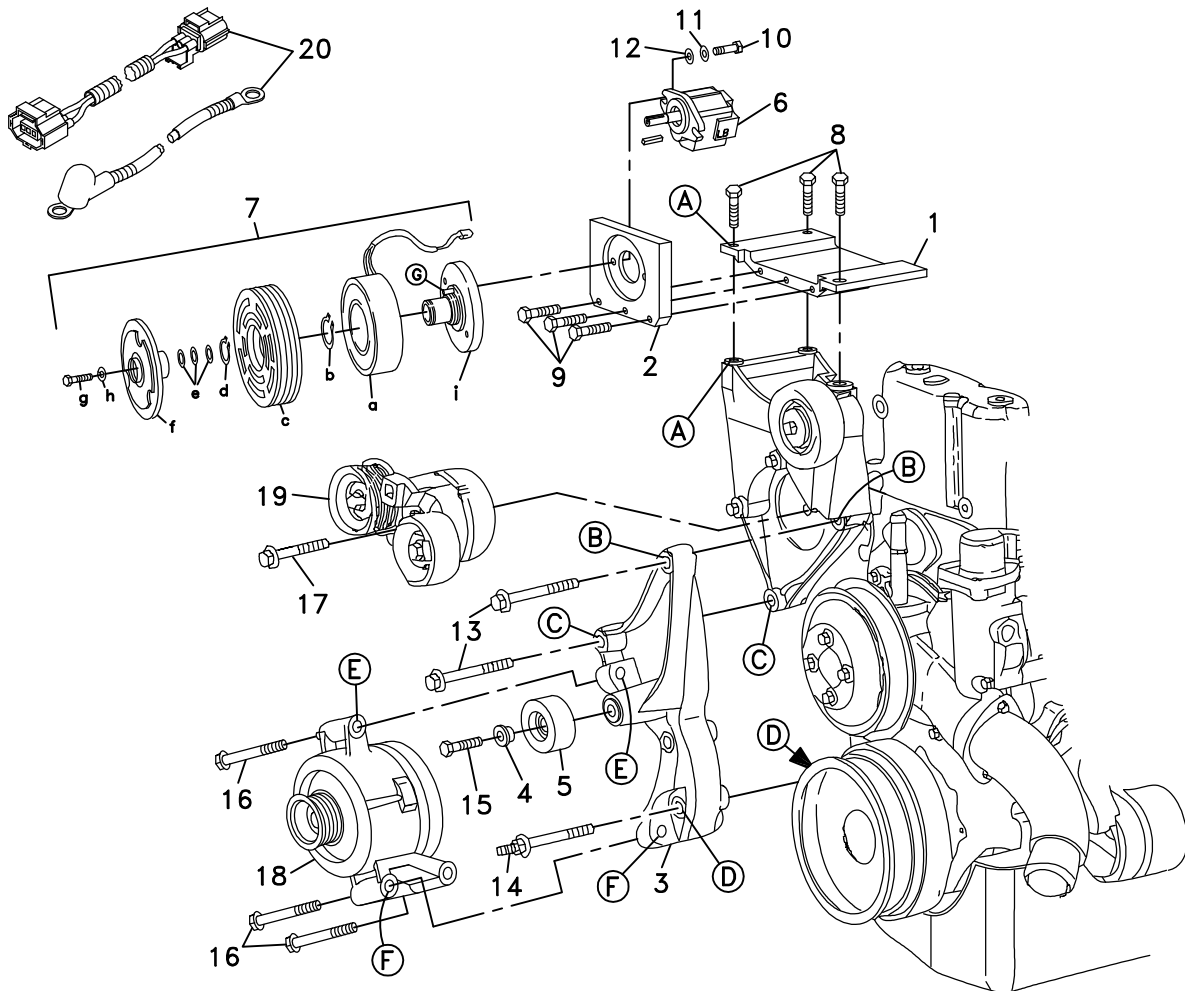


710092	Bracket Assy. (Inc. item 1, 2)		Kit No.	700338
711195	Bracket Bolt Pkg. (Inc. items 8, 9, 13, 14)		Make	Ford (Van)
None	Pulley Bolt Pkg.		Engine	7.3L
711193	Idler Bolt Pkg. (Inc. items 4, 15)		Fuel	Diesel
None	Fan Spacer Bolt Pkg.		Year	1998
			Equipment	A/C, Turbo
			Revised	B 2-3-00

ITEM	PART #	DESCRIPTION
1.	711169	Base plate
2.	711191	Pump plate
3.	711194	Lower alternator brkt.
4.	711073	Idler bushing
5.	740249	Idler pulley 2.50" dia.
6.	*	Pump
7.	740183	Clutch
8.	110479	M10 x 30 bolt
9.	110435	3/8NC x 1 1/2 Bolt
10.	110425	3/8NC x 1 1/4 Bolt
11.	110672	3/8 Lock washer
12.	110676	3/8 Flat washer
13.	110567	M10 x 80 Bolt
14.	110232	M10 - M12 x 78 Stud bolt
15.	110526	M10 x 40 Bolt
16.	OEM	Bolt
17.	OEM	Bolt
18.	OEM	Alternator
19.	OEM	Tensioner
20.	730021	Jumper wires/Lower alternator
21.	740263	Serp. belt/Ford F8T2-8620-GA

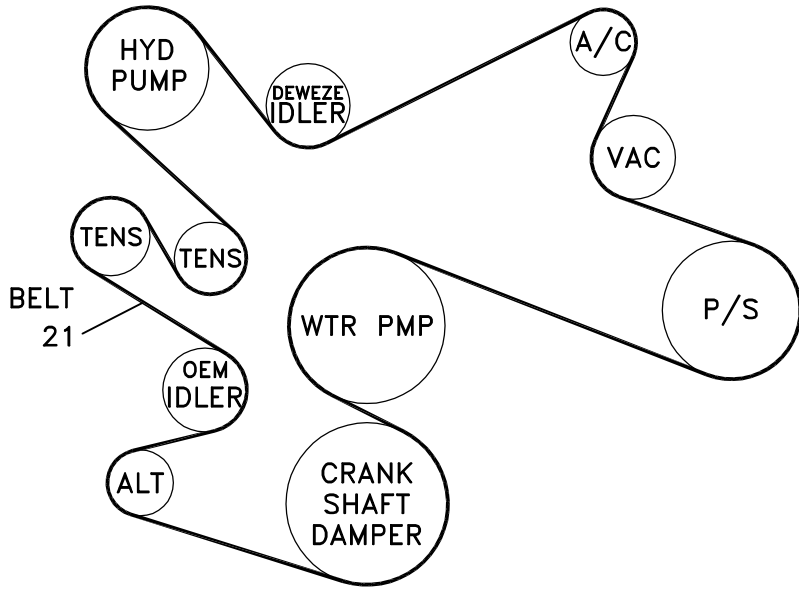
* See master list for pump part no.



(A),(B),(C)... Denotes bolt holes in engine to locate corresponding holes in Pump Brkt.

FIG. 2

BELT DIAGRAM



DEWEZE

Clutch Pump Kit
#700338
Ford 7.3L
V A N
1998-

INSTALLATION INSTRUCTIONS

NOTE: Suction hose to pump must be a wire braid hose; minimum 1" I.D. for 7 & 9 gpm pumps. Installations with smaller suction hoses will void the pump warranty.

1. Disconnect battery.
2. Remove OEM serpentine belt.
3. Disconnect wiring from alternator.
4. Remove alternator from top OEM location by removing three bolts. Keep these bolts.
5. Remove the dual tensioner.

If your truck has the heavy duty alternator, place the alternator on the lower mounting bracket (3) before bolting it on the engine and check to make sure the alternator sets flat on the mounting surfaces and there is clearance between the alternator and the bracket. If there is any contact, grind away that part of the bracket so there is sufficient clearance. Tightening the bolts if it does not set flat could break the alternator case.

6. Mount the alternator to the lower alternator bracket (3) using the OEM alternator bolts.
7. Connect the jumper wires (20) from the plug at the wiring harness to the alternator. Mount the alternator and lower alternator bracket to the original alternator bracket using two M10 x 80 bolts (13) at locations B and C, and the M10 - M12 x 78 stud bolt (14) at location D.
If the plug on the supplied alternator jumper wire does not fit the plug on the alternator, the existing wiring can be pulled out of the wiring harness and run to the lower alternator. One of the wires may then have to be spliced to the alternator with a butt connector.
8. Insert idler bushing (4) into snap ring side of idler pulley (5). With the snap ring facing forward, attach idler to mounting boss on lower alternator bracket using M10 x 40 bolt (15).
9. Hold pump (9) onto back of mounting plate (2) and clutch hub (10i) onto front of mounting plate, making sure anti-rotation pin (G) on front of hub is on the side that will be away from the engine. Place two 3/8 x 1 1/4 bolts (14), 3/8 lock washers (15), and 3/8 flat washers (23) through pump, through mounting plate and thread into hub.
10. Slide coil (10a) over hub, aligning hole in the back plate of coil with the anti-rotation pin (G) in the hub. The wires from the coil should be on the same side as the pin (G). Install large snap ring (10b) to hold coil in place.
NOTE: THE BEVEL ON BOTH SNAP RINGS MUST FACE AWAY FROM THE PUMP. REFER TO INSTRUCTION SHEET FOR THE CLUTCH FOR CORRECT INSTALLATION OF SNAP RINGS.
11. Slide clutch pulley (10c) onto hub. Install small snap ring (10d) to hold pulley in place.
12. Place the key (14) onto the pump shaft. Slide the hub/armature (10f) onto the pump shaft aligning the keyways.

NOTE: SET THE AIR GAP BETWEEN THE HUB/ARMATURE AND THE PULLEY USING SHIMS (10e) ACCORDING TO INSTRUCTION SHEET FOR CLUTCH.

13. Thread bolt (10g) and lock washer (10h) into pump shaft. Torque to value in clutch instruction sheet.
14. Install the dual tensioner to its original location using the OEM bolt.
15. Mount the base plate on top of the OEM alternator bracket at location A using three M10 x 30 bolts (8).
16. Connect the hoses to the pump before it is mounted in place, as it will be difficult to get behind the pump after it is bolted on.
17. Mount the pump and pump plate assembly to the front of the base plate using three 3/8 x 1 socket head bolts (9).
18. Install the new serpentine belt (20) as shown in in Fig. 2.
19. Connect the battery.
20. Run the engine and check for any clearance or alignment problems. Adjust as needed.