

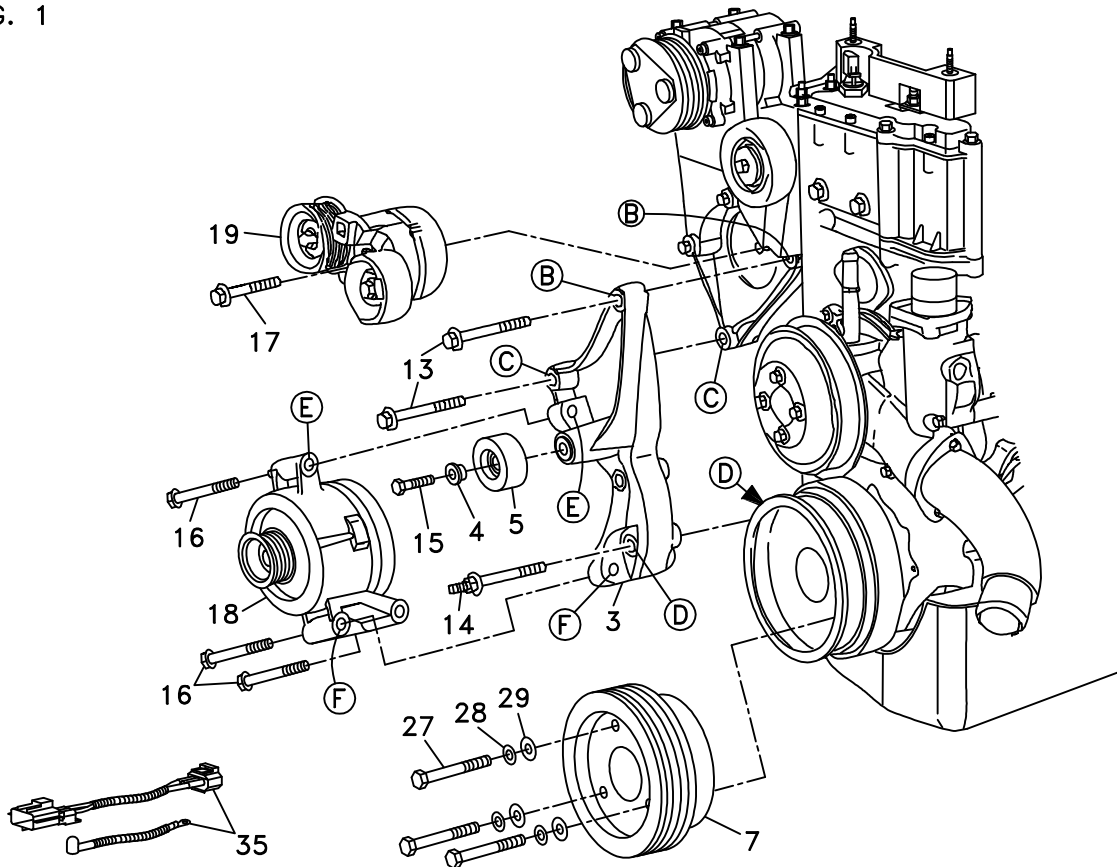
DewEze CLUTCH PUMP KIT

None	Bracket Assy.	Kit No.	700348
711249	Bracket Bolt Pkg. (Inc. items 13, 14, 25, 26)	Make	Ford
711158	Pulley Bolt Pkg. (Inc. items 27-29)	Engine	7.3L
711193	Idler Bolt Pkg./Flat idler on alternator brkt. (Inc. items 4, 15)	Fuel	Diesel
None	Fan Spacer Bolt Pkg.	Year	1999
		Equipment	w/ and w/o AC
		Revised	A 10-12-01

ITEM	PART #	DESCRIPTION
1.	711235	Power steer/Hyd pump mount
2.	711239	Pump foot mount
3.	711194	Lower alternator brkt.
4.	711073	Idler bushing
5.	740249	Idler pulley 2.50" dia.
6.	*	Pump (52R)
7.	740260	Crank pulley
8.	740284	Pump pulley
9.	510241	QD Bushing
10.	110086	1/2 x 1 Bolt
11.	110658	1/2 Flat washer
12.	OEM	Bolt
13.	110567	M10 x 80 Bolt
14.	110232	M10 - M12 x 78 Stud bolt
15.	110526	M10 x 40 Bolt
16.	OEM	Bolt
17.	OEM	Bolt
18.	OEM	Alternator
19.	OEM	Tensioner
20.	740289	Tensioner arm
21.	740261	Idler/flat
	740290	Tensioner assy (inc. 20, 21, 26)
22.	740143	Idler/grooved
23.	110213	Torx head bolt
24.	110250	3/8 x 2 1/2 Socket hd bolt
25.	110442	1/2 x 1 1/4 Bolt
26.	110249	7/16 x 1 3/8 LH Bolt
27.	110180	M10 x 60 Bolt
28.	110689	3/8 Lock washer
29.	110155	3/8 Flat washer
30.	700233	Intercooler tube
31.	700227	Radiator hose
32.	-----	-----
33.	-----	-----
34.	-----	-----
35.	730021	Alternator jumper wires
36.	OEM	Bolt
37.	OEM	Bolt
38.	740277	Belt/Poly Cog 5081265
39.	740288	Belt/Micro-V K080740

* Pump supplied by customer.

FIG. 1



(A),(B),(C)... Denotes bolt holes in engine to locate corresponding holes in Pump Brkt.

FIG. 2

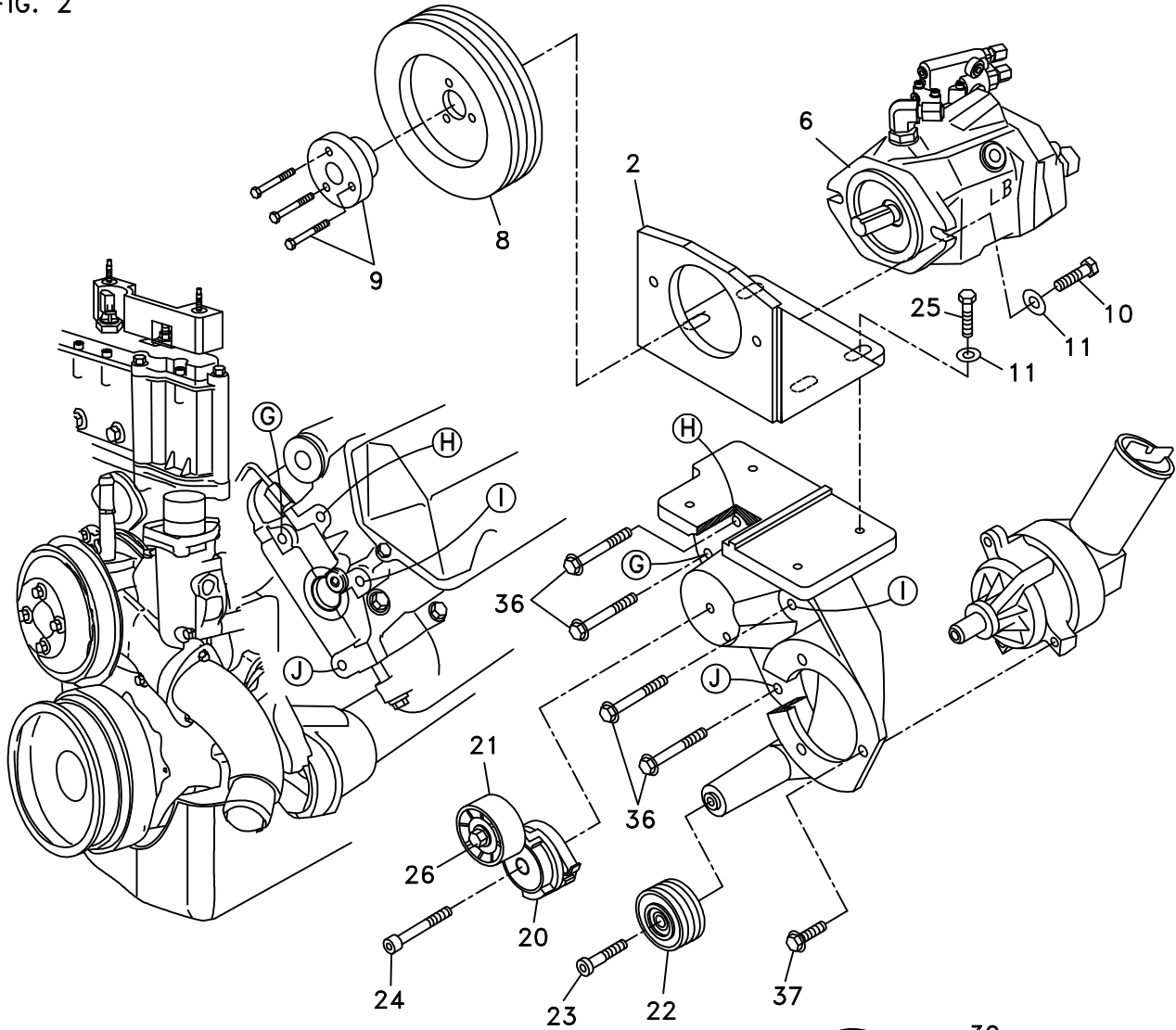


FIG. 3

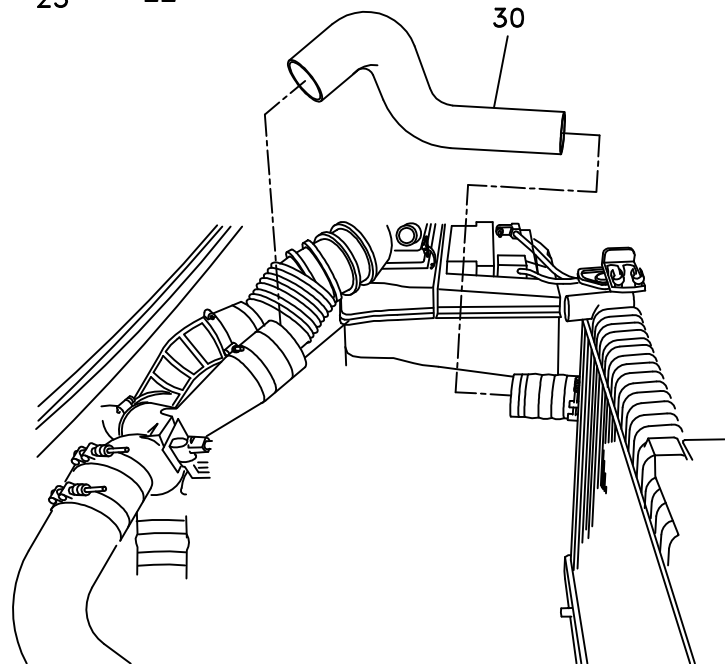


FIG. 4

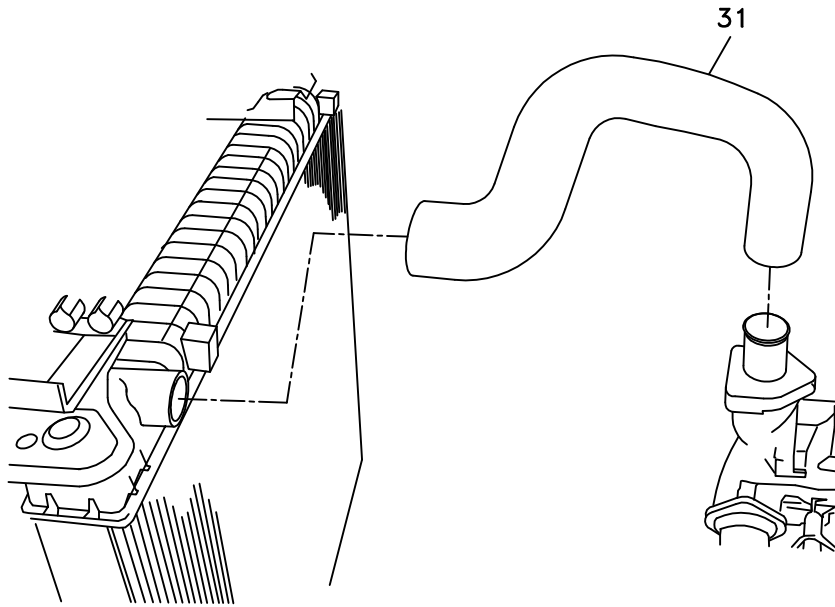
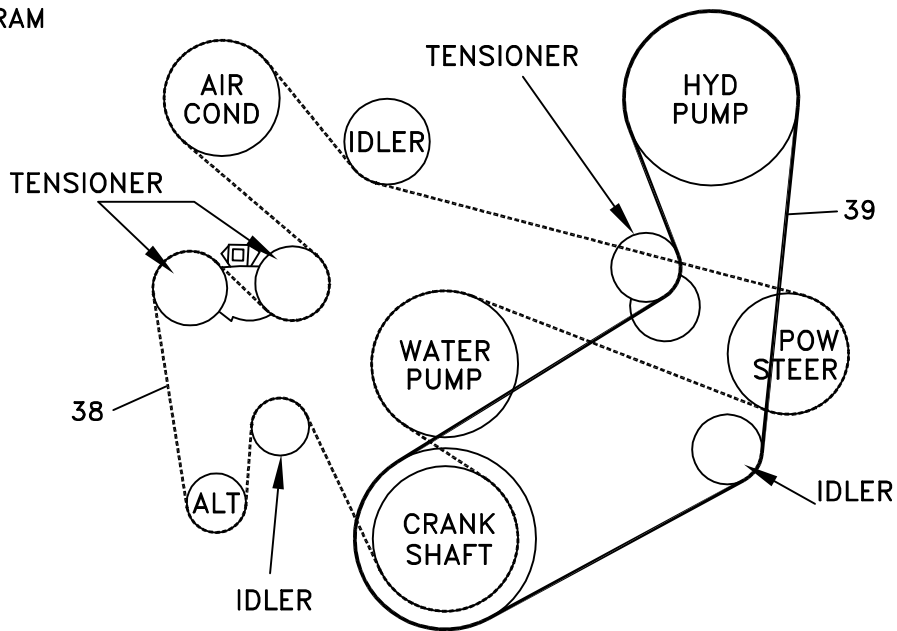


FIG. 5
BELT DIAGRAM



DewEze

Clutch Pump Kit
#700348
Ford 7.3L
W/ and W/O A/C
For 52R Pump
1999

I N S T A L L A T I O N I N S T R U C T I O N S

1. Disconnect battery.
2. Remove OEM serpentine belt.
3. Drain the coolant from the radiator. Remove the upper radiator hose.
4. Remove the fan shroud and the fan.
5. Remove the 3" dia. aluminum intercooler tube that runs from the lower driver's side of the radiator to the top of the engine. Replace with the DewEze intercooler tube (30) using the OEM clamps.
6. Disconnect wiring from alternator.
7. Remove alternator from top OEM location by removing three bolts. Keep these bolts.
8. Make a mark on the power steering pulley hub and on the shaft so they can be reinstalled in the same position. Remove the power steering pulley using a pulley removal tool. Remove the power steering pump and its mounting bracket. Keep these bolts.
9. Remove the dual tensioner.
10. Mount the crank pulley (7) to the damper using three M10 x 60 bolts (27), three 3/8 lock washers (28), and three 3/8 flat washers (29).
11. Mount the alternator to the lower alternator bracket (3) using the OEM alternator mounting bolts you removed from the top mounting location.
12. Connect the alternator jumper wires (35) to the alternator. Mount the alternator and lower alternator bracket to the bottom of the air conditioning bracket at holes B and C using two M10 x 80 bolts (13), and the M10 - M12 x 78 stud bolt (14) at location D on the engine beside the crank pulley. Connect the other ends of the jumper wires to the ends of the wires that were originally connected to the alternator.
13. Insert idler bushing (4) into snap ring side of idler pulley (5). With the snap ring facing forward, attach idler to mounting boss on lower alternator bracket using M10 x 40 bolt (15).
14. Install the dual tensioner to its original location using the OEM bolt.
15. Mount the DewEze power steering bracket (1) at locations G, H, I, and J using the OEM bolts. Mount the power steering pump to the bracket using the OEM bolts. Start the pulley onto the shaft aligning the marks you made earlier. Using a pulley installer tool press the pulley on until it is lined up with the crank pulley using a straightedge across both pulleys.
16. Attach the pump footmount (2) to the top of the power steering bracket using four 1/2 x 1 1/4 bolts (10) with 1/2" flat washers (11) aligning the groove so it will slide freely forward and back. Do not tighten the bolts yet.

17. Attach the pump (6) to the back of the pump footmount (2) using two 1/2 x 1 bolts (10), and two 1/2 flat washers (11).
18. Slide the pump pulley (8) over the pump shaft all the way to the footmount. Slide the QD bushing (9) over the shaft into the pulley. Tighten the 1/4" bolts in the bushing. This will draw the pulley away from the footmount for clearance. Line up the pump pulley with the crank pulley by sliding the footmount in or out using a straightedge across both pulleys. When the pulleys are aligned, tighten the bolts mounting the footmount.
19. Mount the serpentine groove idler (22) onto the power steering bracket at location A using the Torx head bolt (23).
20. Mount the tensioner (20) onto the power steering bracket at location K using a 3/8 x 2 1/2 socket head bolt (24).
21. Install the engine accessory drive cog belt (38) as indicated by the dashed line in the belt diagram. Install the pump drive belt (39) as indicated by the solid line in the belt diagram.
22. Install the fan and fan shroud.
23. Slide the long leg of the DewEze radiator hose (31) onto the thermostat housing. Slide the short leg onto the radiator. Secure with the OEM hose clamps. Replace the coolant back in the radiator.
24. Connect the battery.
25. Run the engine and check for any clearance or alignment problems. Adjust as needed.