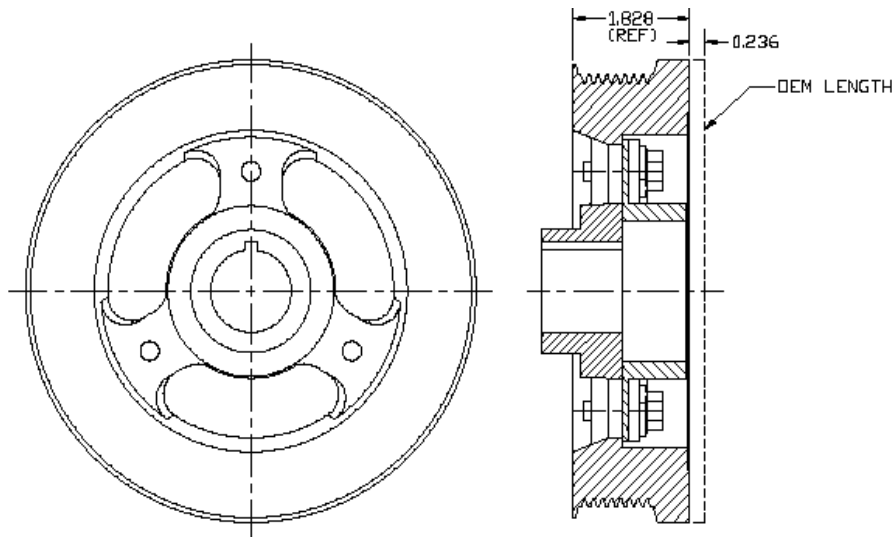


Attach to Kit drawings:
700350, 700352 &
700356.

ATTENTION – CORE RETURN '99-'04 Ford 6.8L Crankshaft Pulley

The original pulley used on a '99-'04 Ford 6.8L engine that is removed with the installation of a DewEze clutch-pump kit may be returned to the factory for credit. A credit of \$90.00 (less your customer discount) will be credited to your account when this part is returned in usable condition. Adequately package pulley to prevent damage in transit. Return freight is your responsibility. Please complete the form below and return a copy with the pulley within 90 days from purchase.



740300 Crankshaft Pulley (740332 – Unmachined)

Please fill out form completely.

Dealer Name _____ Date _____

CO Number _____

HII Dealer Customer Number _____ HII RGA Number _____

Please retain a copy of this form for your records.

If you have any questions, please call HII Service personnel (800-835-1042).

Harper Industries, Inc.

151 E Hwy 160

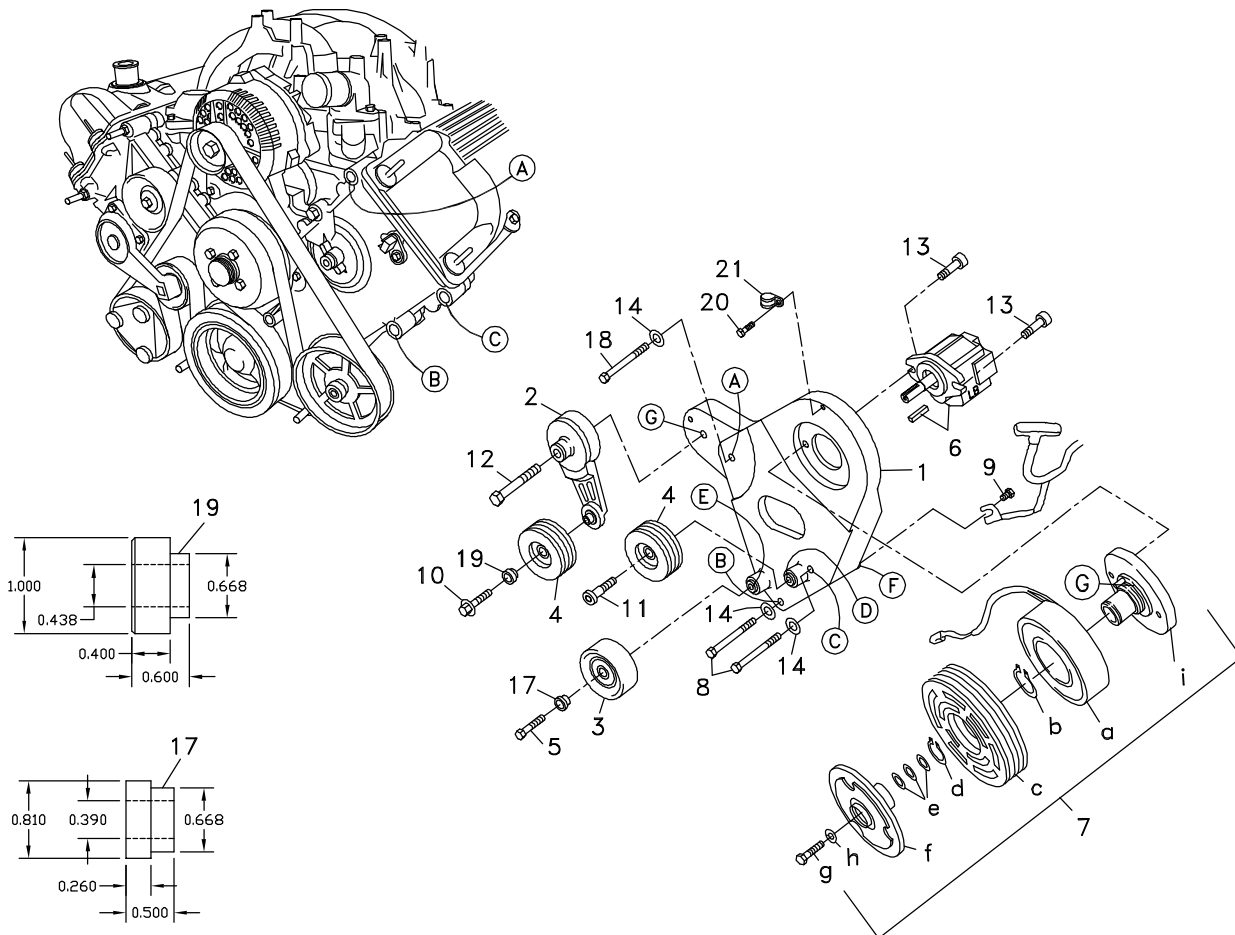
Harper, KS 67058

711264	Bracket Assy. (Inc. item 1)	Kit No.	700356
711269	Bracket Bolt Pkg. (Inc. items 8, 9, 14, 18, 20, 21)	Make	Ford
None	Pulley Bolt Pkg.	Engine	6.8L
711270	Idler Bolt Pkg. (Inc. items 5, 10-12, 17, 19)	Fuel	Gas
None	Fan Spacer Bolt Pkg.	Year	1999-2004
		Equipment	Van, With A/C
		Revised	E 12-6-11



ITEM	PART #	DESCRIPTION
1.	711264	Pump mount bracket
2.	740272	Tensioner
3.	740302	Flat idler
4.	740143	Serpentine idler
5.	110479	M10 x 30 Bolt
6.	*	Pump
7.	740183	Clutch
8.	110215	M10 x 120 x 1.5 Bolt
9.	110422	5/16-18 x 3/4 Bolt
10.	110242	7/16-14 x 2.25 LH Flange head bolt
11.	110213	M10 Torx head bolt
12.	110002	1/2-13 x 3 1/2 Bolt
13.	110395	3/8-16 x 1 Socket head bolt
14.	110676	3/8 Flat washer
15.	740436	Crankshaft spider kit
16.	740300	Crankshaft damper pulley
17.	711072	Bushing
18.	110183	M10 x 100 x 1.5 Bolt
19.	711271	Bushing
20.	110515	1/4-20 x 1/2 Bolt
21.	130011	Adel clamp
22.	740304	Belt/Micro-V K080733

* See master list for pump part no.



BELT DIAGRAM

FIG. 2

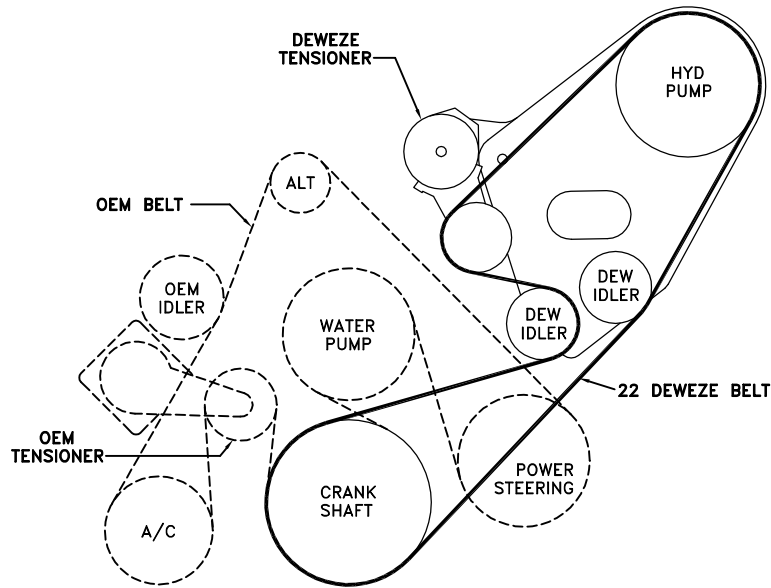
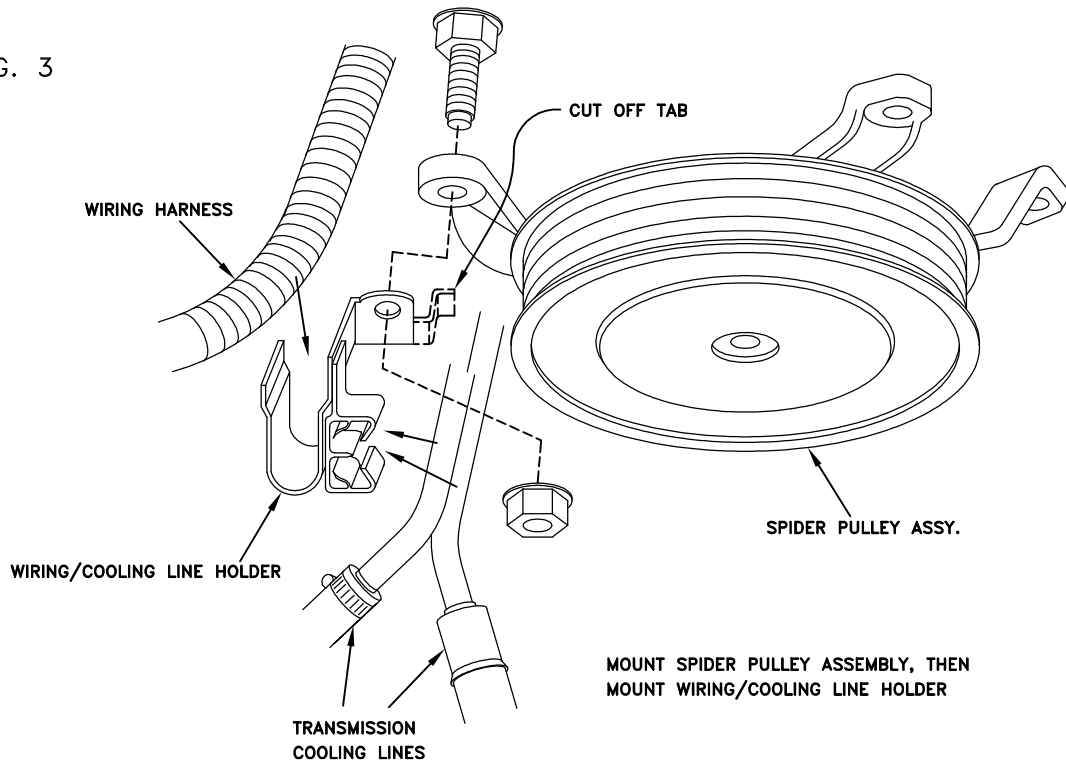


FIG. 3



Clutch Pump Kit

#700356

Ford 6.8L

w/ and w/o A/C

'AA' mount

1999-2004

DEWEZE

INSTALLATION INSTRUCTIONS

1. Disconnect the battery.
2. Drain the radiator.
3. Remove the air cleaner assembly.
4. Remove the upper radiator hose.
5. Remove the OEM belt.
6. Note how far the fan sticks out behind the fan shroud. It will be necessary to trim the shroud to maintain that same distance after the new water pump and fan clutch are installed. Now remove the fan shroud and fan. Remove the water pump pulley and water pump. Install the new water pump with extended hub that is furnished with the kit. Reinstall the original water pump pulley. Torque all bolts to specs in Ford installation sheets.
7. If your truck is model year 2000 or newer, remove the OEM crankshaft damper pulley and replace it with the new crankshaft damper pulley (16) supplied in the kit. Starting with model year 2002, the OEM engine belt drive is a 6-groove system. The crankshaft damper supplied in the kit has 8 grooves. The 8-groove damper can be used as a replacement. Please refer to the three pages from the Ford shop manual provided with these instructions for the correct tools, installation, and torque procedure.
8. Reinstall the OEM belt placing it on the rear six grooves of the crankshaft damper leaving the front two grooves open.
9. Bolt the adapter hub to the center of the crankshaft pulley. Remove the wiring harness/transmission cooling line holder and cut off the tab as shown in Fig. 3. Install the spider/pulley assembly by threading the pulley into the adapter and placing the legs over the stud bolts. Then place the cooling line holder back over the stud bolt it was taken from. Attach spider with two nuts and one bolt as shown. Torque the center adapter and the nuts and bolt to specs shown. Please refer to the four pages of spider mounting instructions provided.
10. Remove OEM bolts from engine at locations A, B, and C. Lay the wiring off to the side.
11. Hold pump (6) onto back of mounting plate (1) and clutch hub (7) onto front of mounting plate, making sure anti-rotation pin (G) on front of hub is on the side that will be away from the engine. Place two 3/8 x 1 socket head bolts (13) through pump, through mounting plate, and thread into hub.
12. Slide coil (7a) over hub, aligning hole in the back plate of the coil with anti-rotation pin (G) in the hub. The wires from the coil should be on the same side as the pin (G). Install large snap ring (7b) to hold coil in place.

NOTE: THE BEVEL ON BOTH SNAP RINGS MUST FACE AWAY FROM THE PUMP. REFER TO INSTRUCTION SHEET FOR THE CLUTCH FOR CORRECT INSTALLATION OF SNAP RINGS.

13. Place the adel clamp (21) over the clutch wires and mount the clamp to the top of the pump bracket with the 1/4 x 1/2 bolt (20).
14. Slide clutch pulley (7c) onto hub. Install small snap ring (7d) to hold pulley in place.
15. Place the key (6) onto the pump shaft. Slide the hub/armature (7f) onto the pump shaft aligning the keyways.

NOTE: SET THE AIR GAP BETWEEN THE HUB/ARMATURE AND THE PULLEY USING SHIMS (7e) ACCORDING TO CLUTCH INSTRUCTION SHEET.

16. Thread bolt (7g) and lock washer (7h) into pump shaft. Torque to value in clutch instruction sheet.
17. See the illustration to distinguish the two idler bushings. Insert the idler bushing (19) into the bearing in one of the serpentine idler pulleys (4). Attach the idler to the tensioner arm (2) with the 7/16 x 2 1/4 LH flange bolt (10). Mount the tensioner assembly on the pump bracket at location G with one 1/2 x 3 1/2 bolt (12), inserting the bolt head on the back of the tensioner into the small hole on the tensioner mounting pad.
18. Attach the other serpentine idler pulley (4) onto the boss at location D with the M10 Torx head shoulder bolt (11). Insert the idler bushing (17) into the bearing in the flat idler pulley (3). Attach the flat idler to the boss at location E with the M10 x 30 bolt (5).
19. Mount the pump bracket onto the engine at location A with the M10 x 100 bolts (18) with 3/8 flat washer (14) and at locations B and C with the M10 x 120 bolts (8) with 3/8 flat washers (14). Torque these bolts to 30-41 ft/lbs.
20. Bolt the wiring harness holder to the back of the pump bracket at location F using a 5/16 x 3/4 bolt (9).
21. Mount the clutch pulley (7) onto the pump shaft using the bolt and washer supplied with the clutch.
22. Install the pump drive belt (22) making sure pulleys are aligned and belt runs true.
23. Installation of the spider pulley will result in interference with the fan. The new water pump has an extended hub to move the fan forward for clearance between it and the pulley. The distance the fan is placed into the fan shroud is critical for maximizing cooling performance. The water pump will move the fan forward. Therefore it is necessary to trim the shroud to maintain the original distance you measured earlier. Then reinstall the shroud and fan. Torque the fan to the specs shown. Make sure there are no clearance problems with the fan and shroud.
24. Replace the upper radiator hose.
25. Replace the coolant in the radiator.
26. Reconnect the battery.
27. Run the engine and check for alignment and clearance problems.