

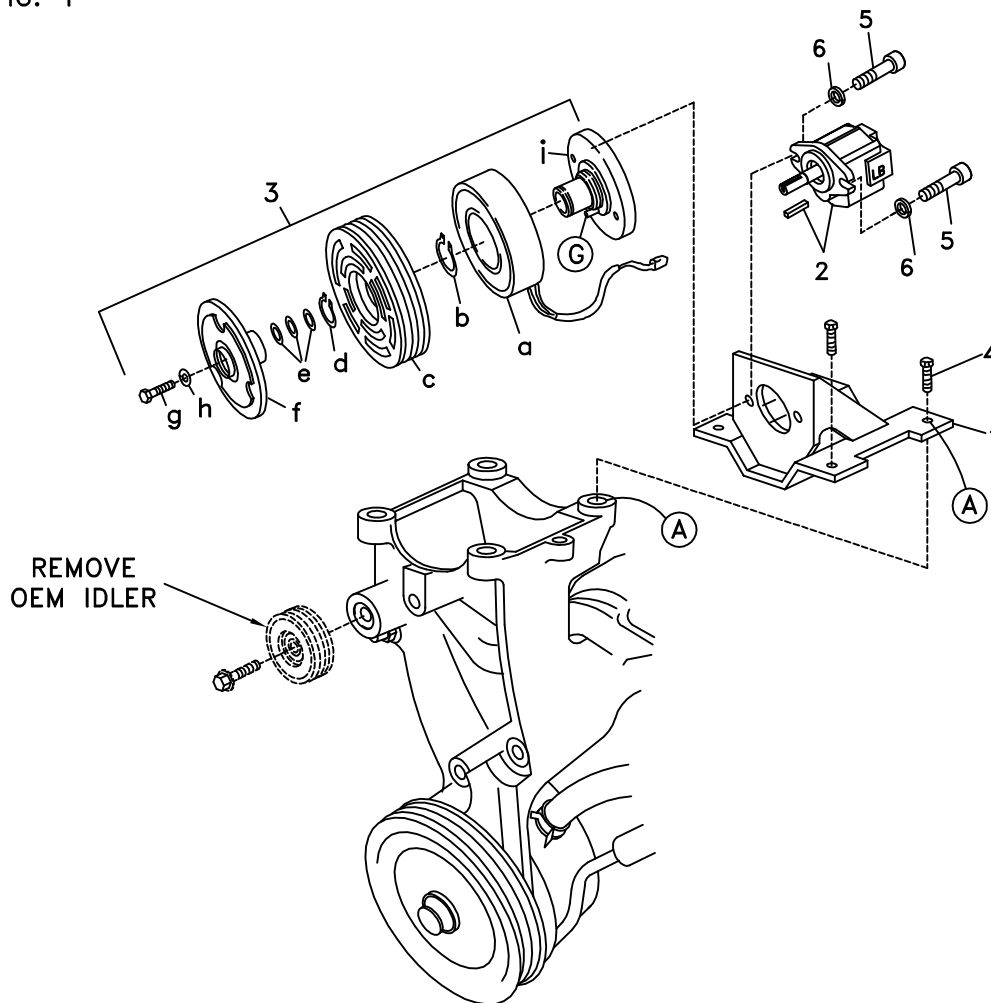
DewEze CLUTCH PUMP KIT

710098	Bracket Assy. (Inc. item 1)		Kit No.	700372
711064	Bracket Bolt Pkg. (Inc. item 4)		Make	Chevy
None	Pulley Bolt Pkg.		Engine	8.1L
None	Idler Bolt Pkg.		Fuel	Gas
None	Fan Spacer Bolt Pkg.		Year	2001
			Options	Without A/C
			Revised	NC 3-14-01

ITEM	PART #	DESCRIPTION
1.	710098	Pump mount plate
2.	*	Pump
3.	740162	Clutch
4.	110479	M10 x 30 Bolt
5.	110465	3/8 x 1 1/4 Bolt
6.	110271	3/8 Lock washer, .55 O.D. x .13 thick
7.	740347	Micro-V Belt/K061015

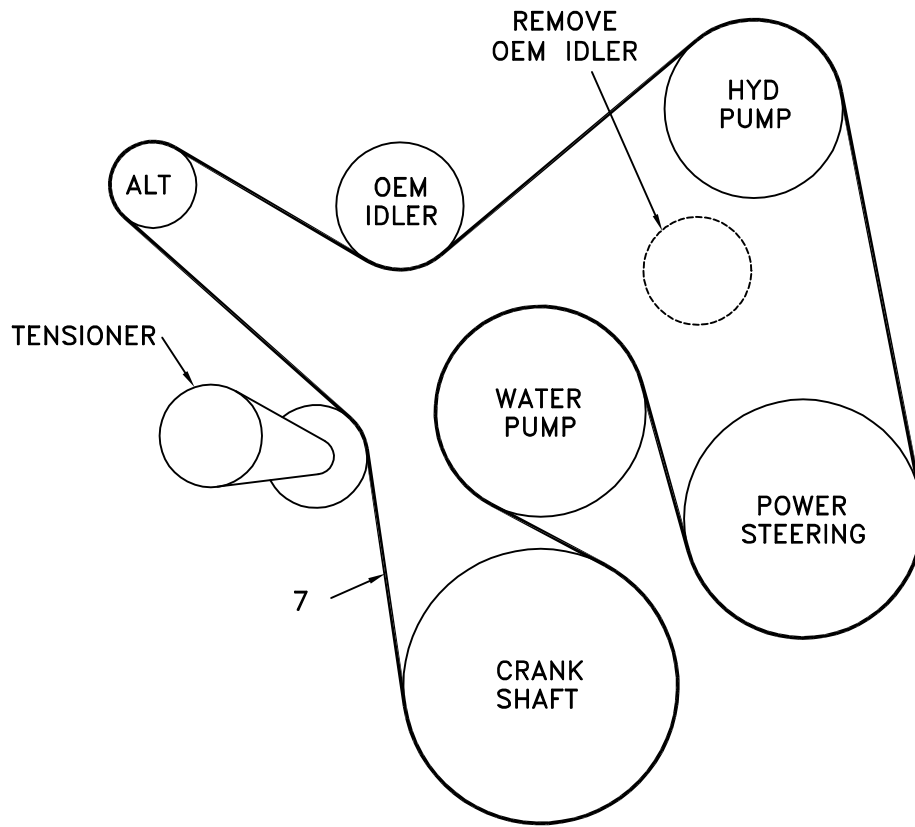
* The only pumps available for this kit are 'AA' mount. See master list for pump part number.

FIG. 1



(A) Denotes bolt holes in engine to locate corresponding holes in Pump Brkt.

FIG. 2



DewEze

Clutch Pump Kit
#700372
Chevy 8.1L
Without A/C
2001 -

INSTALLATION INSTRUCTIONS

1. Disconnect battery.
2. Remove OEM serpentine belt.
3. Remove OEM idler pulley from power steering bracket.
4. Hold pump (2) onto back of mounting plate (1) and clutch hub (3i) onto front of mounting plate, making sure clutch wire and anti-rotation pin (G) on front of hub is on the top. Place two 3/8 x 1 1/4 socket head bolts (5), 3/8 lock washers (6) through pump, through mounting plate and thread into hub.
5. Slide coil (3a) over hub, aligning hole in the back plate of coil with the anti-rotation pin (G) in the hub. The wires from the coil should be on the same side as the pin (G). Install large snap ring (3b) to hold coil in place.
NOTE: THE BEVEL ON BOTH SNAP RINGS MUST FACE AWAY FROM THE PUMP. REFER TO INSTRUCTION SHEET FOR THE CLUTCH FOR CORRECT INSTALLATION OF SNAP RINGS.
6. Slide clutch pulley (3c) onto hub. Install small snap ring (3d) to hold pulley in place.
7. Place the key (2) onto the pump shaft. Slide the hub/armature (3f) onto the pump shaft aligning the keyways.
NOTE: SET THE AIR GAP BETWEEN THE HUB/ARMATURE AND THE PULLEY USING SHIMS (3e) ACCORDING TO INSTRUCTION SHEET FOR CLUTCH.
8. Thread bolt (3g) and lock washer (3h) into pump shaft. Torque to value in clutch instruction sheet.
9. Bolt on pump mounting plate (1) using four 10mm x 30mm (4) in holes A at top of OEM air conditioner bracket.
10. Install belt (7) as shown in fig. 2.
11. Reconnect the battery.
12. Run the engine and check for any clearance or alignment problems.