

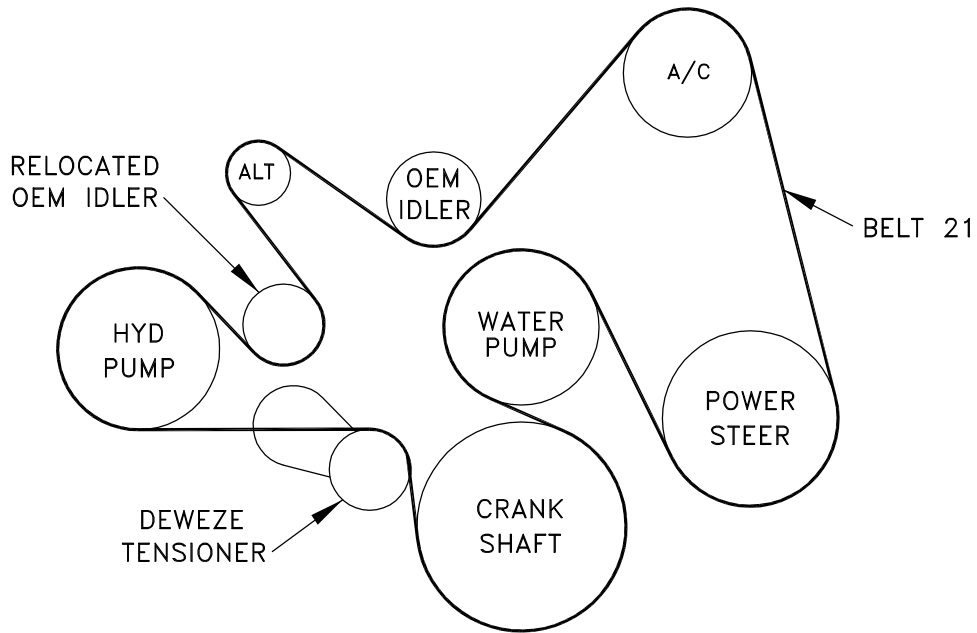
None	Bracket Assy.		Kit No.	700373	
711332	Bracket Bolt Pkg. (Inc. items 12, 14, 15)		Make	Chevy	
None	Pulley Bolt Pkg.		Engine	8.1L	
711334	Idler Bolt Pkg. (Inc. items 6, 16-18)		Fuel	Gas	
None	Fan Spacer Bolt Pkg.		Year	2000-	
			Equipment	A/C	
			Revised	NC	4-20-01

ITEM	PART #	DESCRIPTION
1.	710096	Engine bracket
2.	711291	Plate/pump mount
3.	-----	-----
4.	-----	-----
5.	-----	-----
6.	711333	Idler bushing
7.	OEM	Idler pulley from OEM tensioner
8.	740335	Tensioner
9.	*	Pump
10.	740162	Clutch
11.	-----	-----

12.	110465	3/8-16 x 1 1/4 skt head bolt
13.	-----	-----
14.	110488	M10 x 45 x 1.5 Bolt
15.	110479	M10 x 30 x 1.5 Bolt
16.	110225	M12 x 90 x 1.75 Bolt
17.	110180	M10 x 60 x 1.5 Bolt
18.	110676	3/8 Flat washer
19.	-----	-----
20.	110271	3/8 Lock washer, .55 O.D. x .13 thick
21.	740336	Belt/Dayco 5061223

FIG. 1  
BELT DIAGRAM



(A)(B)(C)... Denotes bolt holes in engine to locate corresponding holes in Pump Brkt.

FIG. 2A

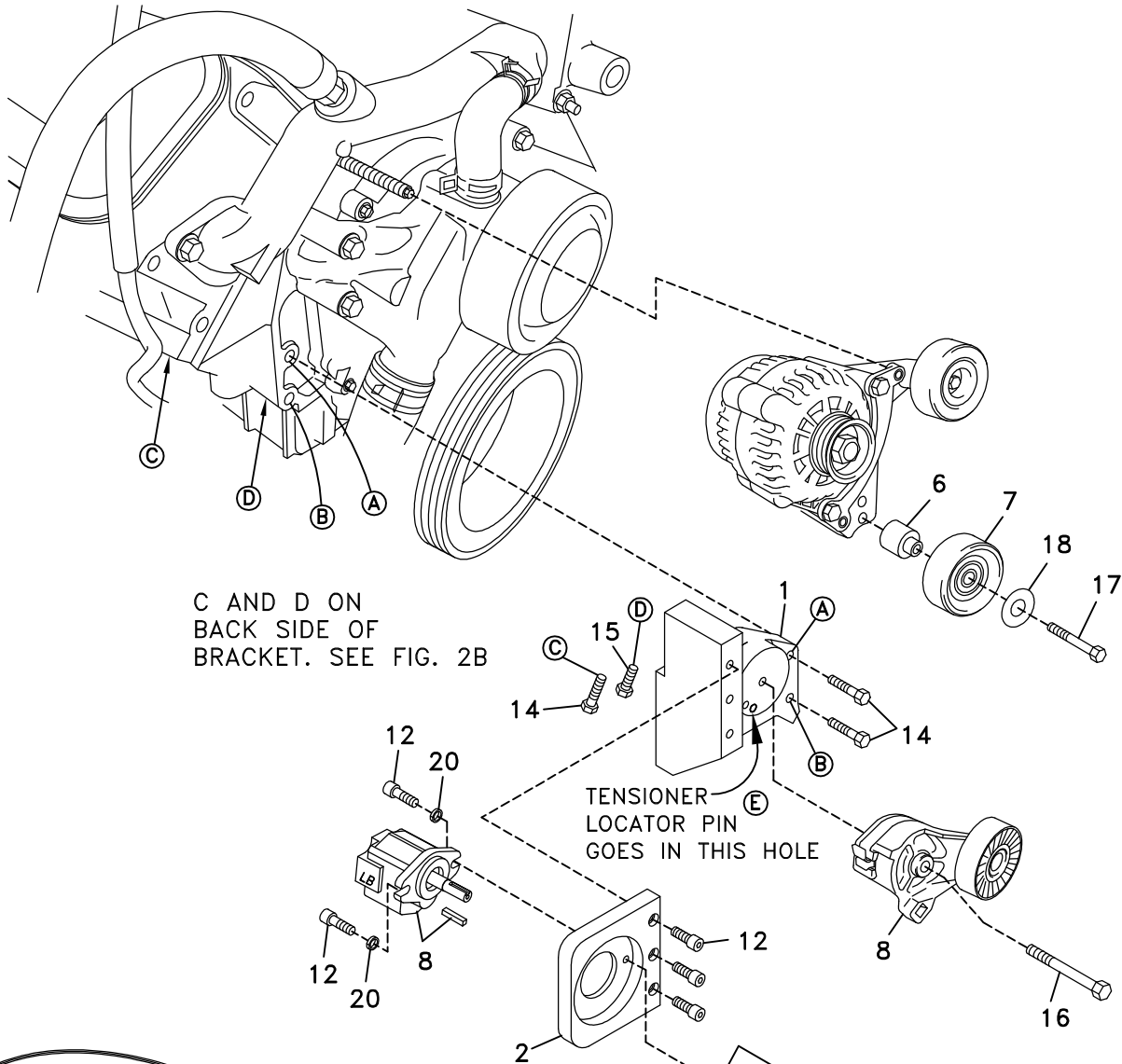
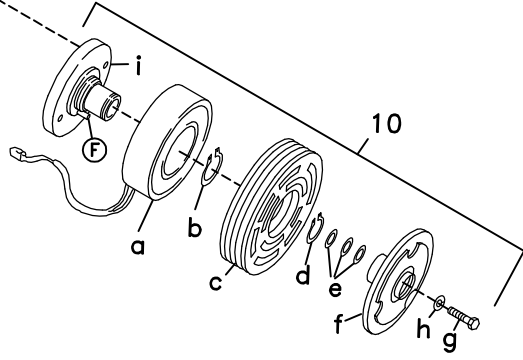
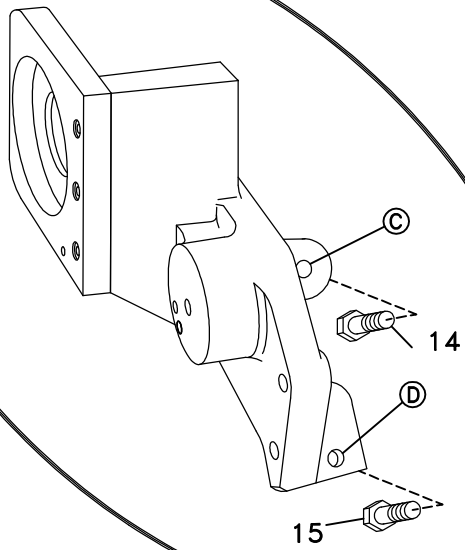


FIG. 2B



# DewEze

Clutch Pump Kit  
#700373  
Chevrolet/  
GMC 8.1L  
With A/C  
'AA' mount  
2000-

## INSTALLATION INSTRUCTIONS

1. Disconnect the battery.
2. Remove the OEM serpentine belt. Remove the fan and shroud.
3. Remove the OEM tensioner from the alternator bracket. Remove the idler from the tensioner. Place this idler on the idler bushing (6), insert the M10 x 60 bolt (17) through a 3/8 flat washer (18), the idler pulley and the bushing and thread it into the alternator bracket where the tensioner originally was.  
**NOTE: The alternator and its mounting bracket do not need to be removed. It is moved out of the way in the drawing only to give a clearer view of the pump mounting bracket location.**
4. Mount the pump plate (2) to the engine bracket (1) with three 3/8 x 1 1/4 socket head bolts (12).
5. Attach the DewEze tensioner (8) to the bracket with the M12 x 90 bolt (16). Be sure to place the locating boss on the back of the tensioner in the lower 5/16" hole positioned at about 7 o'clock at location E.
6. Hold pump (8) onto back of mounting plate (2) and clutch hub (10i) onto front of mounting plate, making sure clutch wire and anti-rotation pin (F) on front of hub is on the top. Place two 3/8 x 1 1/4 socket head bolts (19), 3/8 lock washers (20) through pump, through mounting plate and thread into hub.
7. Slide coil (10a) over hub, aligning hole in the back plate of coil with the anti-rotation pin (F) in the hub. The wires from the coil should be on the same side as the pin (F). Install large snap ring (10b) to hold coil in place.  
**NOTE: THE BEVEL ON BOTH SNAP RINGS MUST FACE AWAY FROM THE PUMP. REFER TO INSTRUCTION SHEET FOR THE CLUTCH FOR CORRECT INSTALLATION OF SNAP RINGS.**
8. Slide clutch pulley (10c) onto hub. Install small snap ring (10d) to hold pulley in place.
9. Place the key (8) onto the pump shaft. Slide the hub/armature (10f) onto the pump shaft aligning the keyways.  
**NOTE: SET THE AIR GAP BETWEEN THE HUB/ARMATURE AND THE PULLEY USING SHIMS (10e) ACCORDING TO INSTRUCTION SHEET FOR CLUTCH.**
10. Thread bolt (10g) and lock washer (10h) into pump shaft. Torque to value in clutch instruction sheet.
11. Remove the ground cable from the engine at location D. Mount the bracket to the engine at locations A and B with two M10 x 45 bolts (14). Thread another M10 x 45 bolt (14) up through the upper hole on the rear of the pump bracket at location C and into the engine. Insert the M10 x 30 bolt (15) through the ground cable and into the lower hole in the rear of the bracket at location D and into the engine.

12. Install the DewEze belt (21) as shown in the belt diagram.
13. Reconnect the battery. Run the engine to check alignment and clearance.
14. Install fan and fan shroud. Run engine again with everything in place to check alignment and clearance.