

Bracket Assy.	711393	(Inc. items 1, 2)
Bolt Packages:		
Bracket	711394	(Inc. items 7-9)
Pulley	711395	(Inc. item 10)
Idler	None	
Tensioner	None	

Make	Mitsubishi FE-SP	
Engine	4.89L	
Fuel	Diesel	
Year	2002-	
Equipment	Turbo, A/C	
Revised	B	4-30-02

Item	Part No.	Description
1.	711363	Engine bracket
2.	711364	Tensioner mount
3.	710936	Pump plate
4.	740348	Fan pulley
5.	740349	Tensioner
6.	*	Pump
7.	110295	M10 x 30 x 1.5 Skt hd bolt
8.	110465	3/8-16 x 1 1/4 Skt hd bolt
9.	110640	M10 x 1.5 Nut
10.	710349	M8 x 40 x 1.5 Stud
11.	110425	3/8-16 x 1 1/4 bolt
12.	110676	3/8 Flat washer
13.	OEM	M8 x 1.25 Nut
14.	OEM	Fan
15.	OEM	Heater hose
16.	OEM	Hose clamp
17.	OEM	Intercooler tube
18.	740144	Clutch
19.	742001	Belt/Micro-V K060505

FIG. 1

ROTATE THE INTERCOOLER TUBE FORWARD OUT OF THE WAY

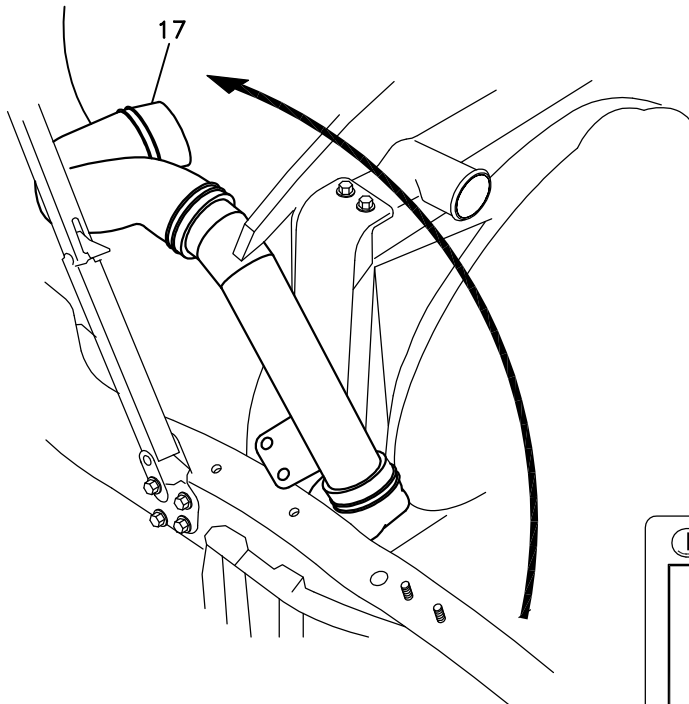


FIG. 5 BELT DIAGRAM

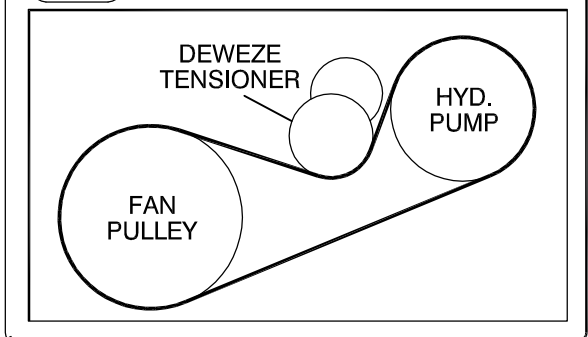


FIG. 2

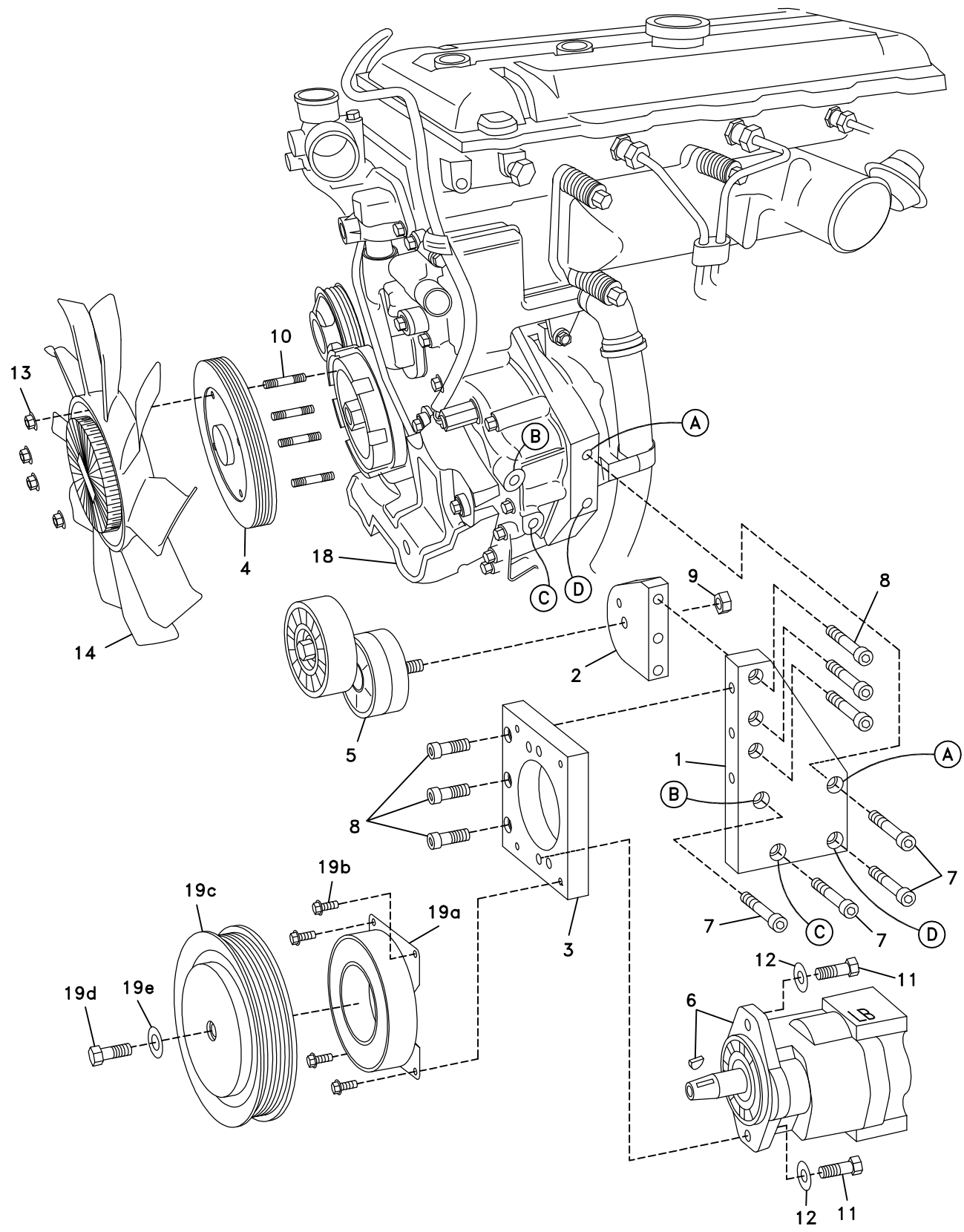
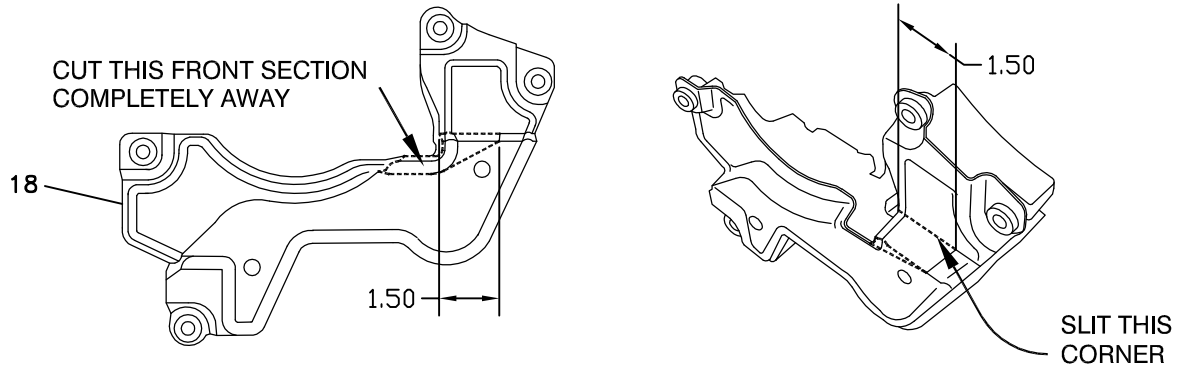


FIG. 3

ENGINE SOUND INSULATION PANEL

OEM CONFIGURATION



AFTER MODIFICATION

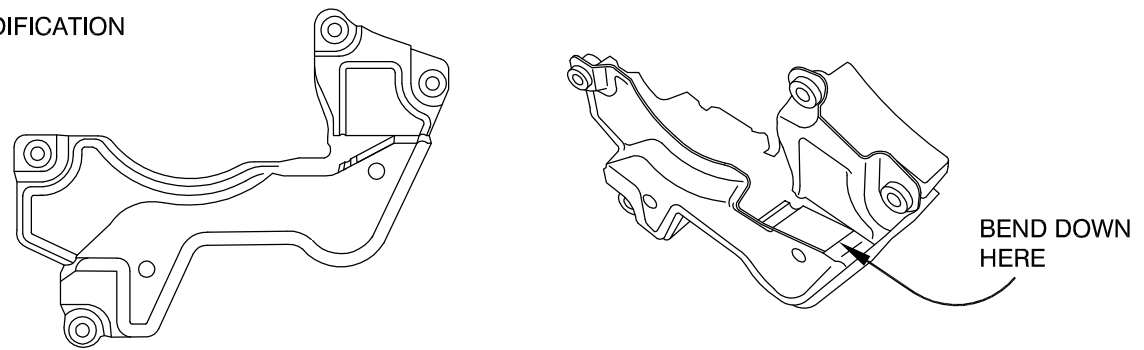
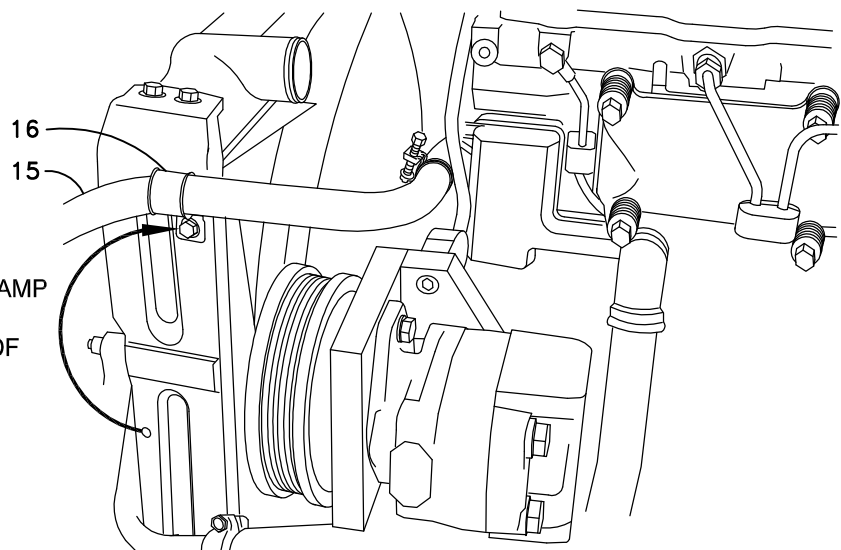


FIG. 4

MOVE HEATER HOSE CLAMP FROM LOWER HOLE TO EXISTING HOLE IN TOP OF RADIATOR.



DewEze

Clutch Pump Kit

Clutch Pump Kit
700388
Mitsubishi
FE-SP
4.89L
'A' mount
2001-

INSTALLATION INSTRUCTIONS

1. Disconnect the battery.
2. Drain enough coolant from the radiator to get it below the upper hose. Remove the OEM upper radiator hose.
3. Unclamp the heater hose (15) from the engine. Unbolt the hose clamp (16) from the radiator. Move the hose forward out of the way.
4. Remove the two nuts holding the intercooler tube (17) to the frame. Unclamp the hose from the engine. Rotate the tube forward beside the radiator to get it out of the way.
5. Unbolt the radiator brace from the top of the radiator. Remove the nuts (13) holding the fan on. Push the radiator forward to remove the fan (14). Save the fan nuts. Remove the OEM stud bolts. Replace with the M8 x 40 stud bolts (10). The short end of the stud bolt goes into the hub.
6. Remove the sound insulation panel (18) from the lower front of the engine. There are two loose bushings on the back of the panel at the bottom. Be sure to retrieve those. Notch and bend the panel as shown in Fig. 3. Replace the panel with the bushings.
7. Place the pump drive pulley (4) on the stud bolts. Make sure there is adequate clearance between the pulley and the insulation panel. If not, trim or bend more of the panel. Put the fan (14) on the stud bolts. Replace the OEM nuts (13). Place the belt (20) over the fan and on to the drive pulley (4).
8. Mount the tensioner bracket (2) to the engine bracket (1) with three 3/8 x 1 1/4 socket head bolts (8). Mount the bracket assembly to the engine at locations A, B, C, and D with four M10 x 30 socket head bolts.
9. Place the intercooler tube back in its original location replacing the OEM nuts and clamping the hose to the engine.
10. Mount the tensioner (5) to the bracket with the M10 nut (9) on the back.
11. Mount the pump (6) on the pump plate (3) with two 3/8 x 1 1/4 bolts (11) and two 3/8 flat washers (12). Mount the pump and plate to the engine bracket with three 3/8 x 1 1/4 socket head bolts (8).
12. Replace the radiator brace. Move the heater hose clamp to the top of the radiator side. Clamp the hose to its original location on the engine.
13. Mount the clutch coil (19a) with the four 1/4 x 1/2 flange head bolts (19b) provided with the clutch. Mount the clutch pulley (19c) with the 5/16 x 1 1/4 bolt (19d) and heavy flat washer (19e) provided with the clutch.
14. Replace the top radiator hose and the coolant.
15. Run the engine and check for any clearance or alignment problems. Adjust as needed.