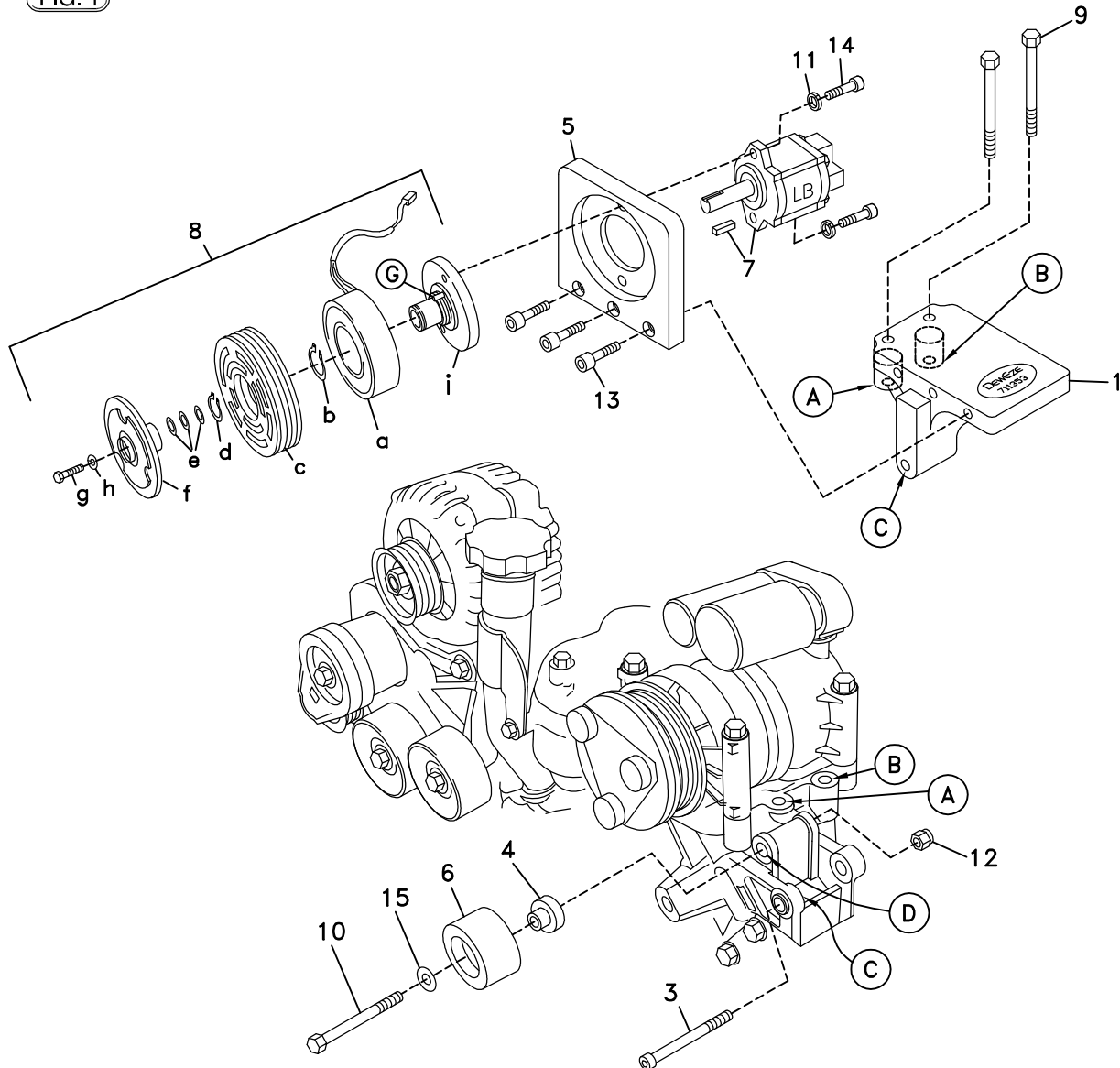


Bracket Assy.	None
Bolt Packages:	
Bracket	711396 (Inc. items 3, 9, 12, 13)
Pulley	None
Idler	711397 (Inc. items 4, 10, 15)
Idler	None
Tensioner	None

Make	Chevrolet	
Engine	6.6L Duramax	
Fuel	Diesel	
Year	2002-05	
Equipment	Turbo, A/C	
Revised	C	10-25-05

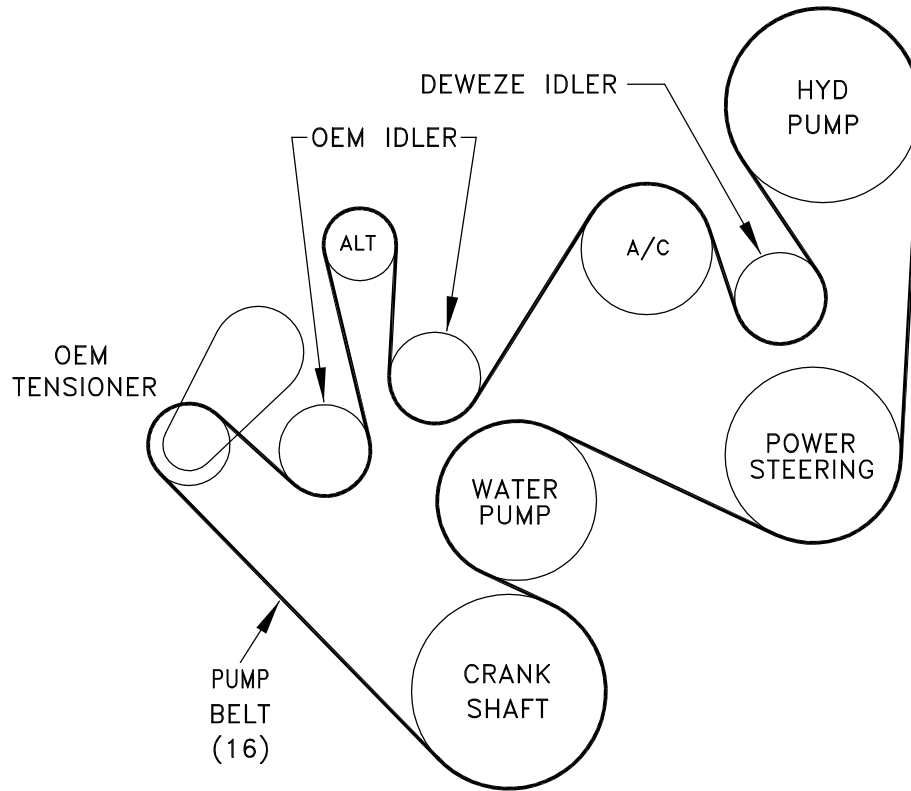
Item	Part No.	Description	Item	Part No.	Description
1.	710099	Pump mount bracket	9.	110217	M10 x 70 x 1.5 Bolt
2.	-----	-----	10.	110487	M10 x 120 x 1.5 Bolt
3.	110188	M10 x 80 x 1.5 Socket head bolt	11.	110271	3/8 Lock washer, .55 O.D. x .13 thick
4.	711461	Idler bushing	12.	110101	M10 x 1.5 Lock nut
5.	711291	Pump plate	13.	110395	3/8-16 x 1 Socket head bolt
6.	740242	Idler pulley	14.	110425	3/8-16 x 1 1/4 Socket head bolt
7.	*	Pump / Rear port	15.	110676	3/8 Flat washer
8.	740162	Clutch	16.	740266	Belt/Poly Cog 1380K6BK

FIG. 1



(A),(B),(C)... Denotes bolt holes in engine to locate corresponding holes in Pump Brkt.

FIG. 2
BELT DIAGRAM



DewEze

Clutch Pump Kit

INSTALLATION INSTRUCTIONS

#700390

Chevy 6.6L
with A/C
'AA' mount
2002-05

1. Disconnect the battery.
2. Remove the OEM belt.
3. Bolt the pump plate (5) to the base plate (1) with three 3/8 x 1 socket head bolts (13). Torque to 20 ft-lb.
4. Insert the two M10 x 70 bolts (9) through the holes in the notched end of the base plate (1) and into the air conditioner mounting bracket at locations A and B. Torque to 25 ft-lb. Thread the M10 x 80 socket head bolt (3) into the hole at Location C and through the bottom lug of the pump bracket. Torque to 25 ft-lb.
5. Push the idler bushing (4) into the back (the side without the snap ring) of the idler pulley (6). Insert the M10 x 120 bolt (10) through a 3/8 flat washer (15), through the idler pulley and bushing and into the hole on the air conditioner bracket at location D. Thread the M10 lock nut (12) onto bolt (10). Torque to 25 ft-lb.
6. Hold pump (7) onto back of mounting plate (5) and clutch hub (8i) onto front of mounting plate, making sure clutch wire and anti-rotation pin (G) on front of hub is on the top. Place two 3/8 x 1 1/4 socket head bolts (14) with 3/8 high collar lock washers (11) through pump, through mounting plate and thread into hub.
7. Slide coil (8a) over hub, aligning hole in the back plate of coil with the anti-rotation pin (G) in the hub. The wires from the coil should be on the same side as the pin (G). Install large snap ring (8b) to hold coil in place.
NOTE: THE BEVEL ON BOTH SNAP RINGS MUST FACE AWAY FROM THE PUMP. REFER TO INSTRUCTION SHEET FOR THE CLUTCH FOR CORRECT INSTALLATION OF SNAP RINGS.
8. Slide clutch pulley (8c) onto hub. Install small snap ring (8d) to hold pulley in place.
9. Place the key (7) onto the pump shaft. Slide the hub/armature (8f) onto the pump shaft aligning the keyways.
NOTE: SET THE AIR GAP BETWEEN THE HUB/ARMATURE AND THE PULLEY USING SHIMS (8e) ACCORDING TO INSTRUCTION SHEET FOR CLUTCH.
10. Thread bolt (8g) and lock washer (8h) into pump shaft. Torque to value in clutch instruction sheet.
11. Install the belt (16) as shown in the belt diagram (Fig. 2).
12. Connect the battery.
13. Run the engine and check for any clearance or alignment problems. Adjust as needed.