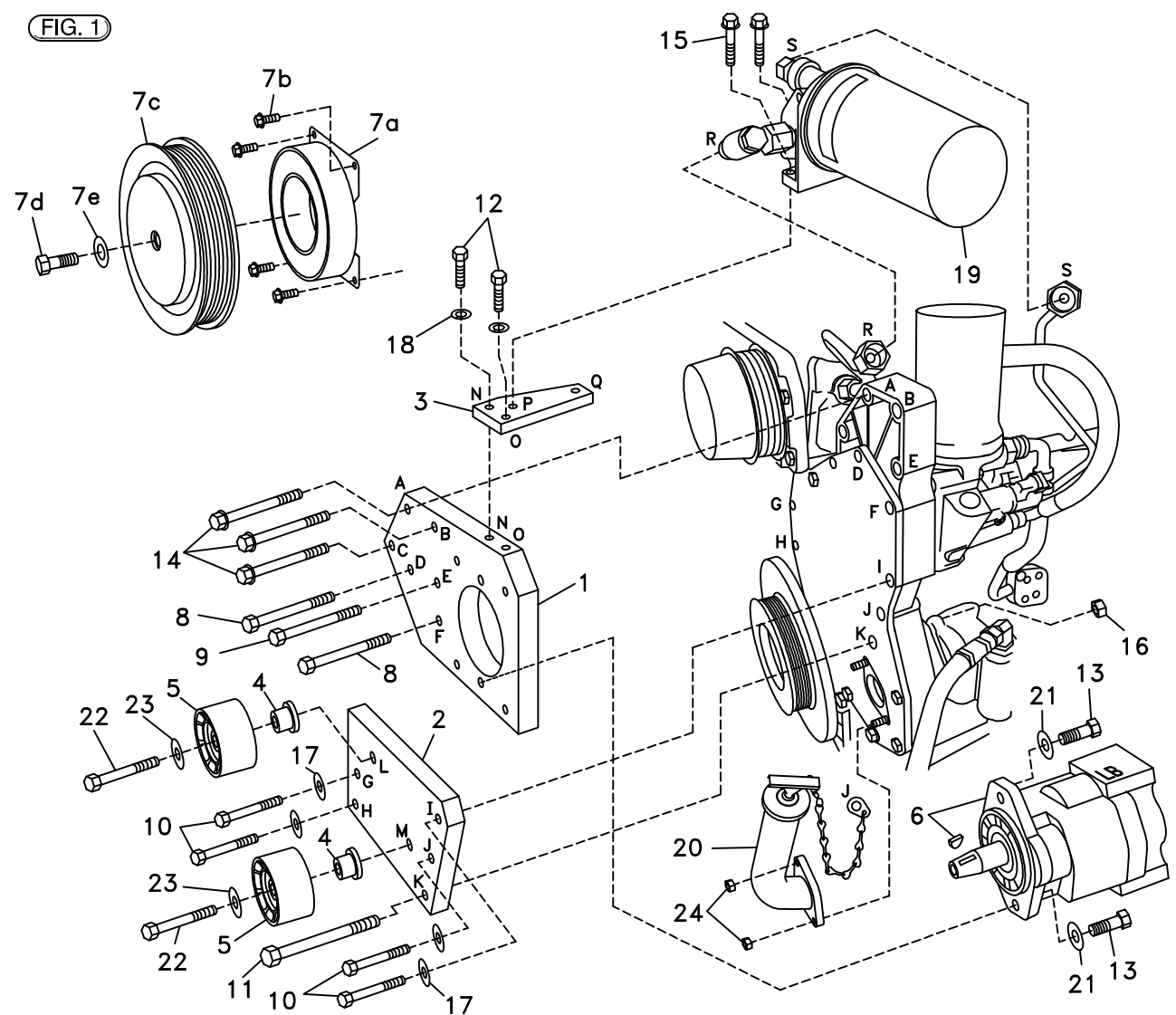


Bracket Assy.	711438	(Inc. items 1-3)
Bolt Packages:		
Bracket	711436	(Inc. items 8-12, 17, 18)
Pulley	None	
Idler	711437	(Inc. items 4, 22, 23)
Tensioner	None	

Make	Ford F-650, F-750	
Engine	Cat 3126	
Fuel	Diesel	
Year	2002-	
Equipment	Turbo, A/C	
Revised	A	9-23-02

Item	Part No.	Description
1.	711432	Pump bracket
2.	711433	Idler bracket
3.	711434	Filter bracket
4.	711435	Idler bushing
5.	740261	Idler pulley
6.	*	Pump
7.	740148	Clutch
8.	110559	M8 x 40 x 1.25 Bolt
9.	110526	M10 x 40 x 1.5 Bolt
10.	110558	M8 x 50 x 1.25 Bolt
11.	110701	M12 x 100 x 1.5 Bolt
12.	110423	5/16-18 x 1 Bolt
13.	110425	3/8-16 x 1 1/4 Bolt
14.	OEM	Bolt
15.	OEM	Bolt
16.	OEM	M12 Nut
17.	110703	M8 Flat washer
18.	110674	5/16 Lock washer
19.	OEM	Fuel filter
20.	OEM	Oil fill tube
21.	110676	3/8 Flat washer
22.	110702	7/16-14 x 2.25 Bolt
23.	110670	7/16 Flat washer
24.	OEM	Nut
25.	742007	Belt, Micro-V K081124

FIG. 1



A, B, C... Denotes bolt holes in engine to locate corresponding holes in Pump Brkt.

FIG. 2

OEM CONFIGURATION

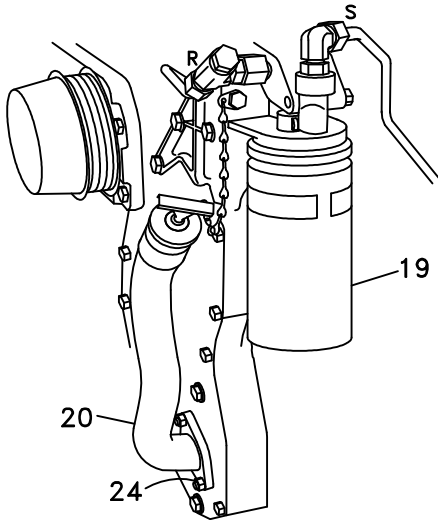


FIG. 3

OIL FILL TUBE MODIFICATION

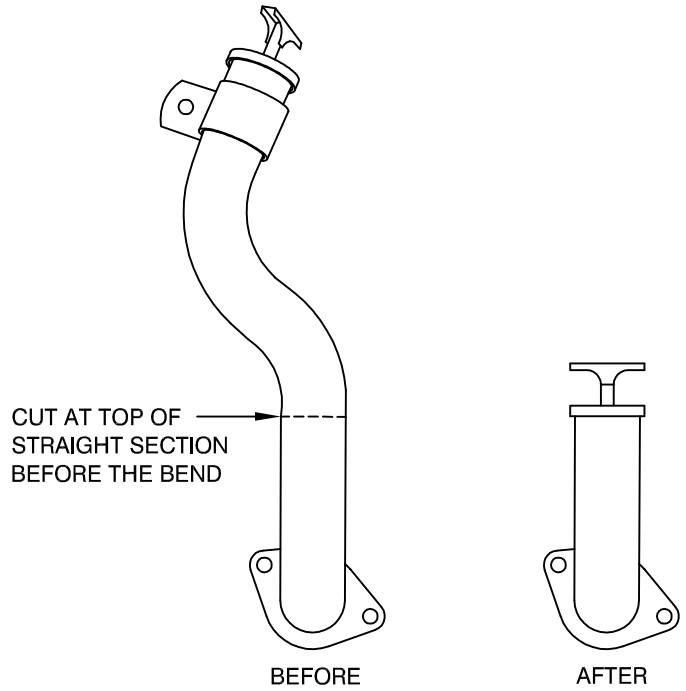
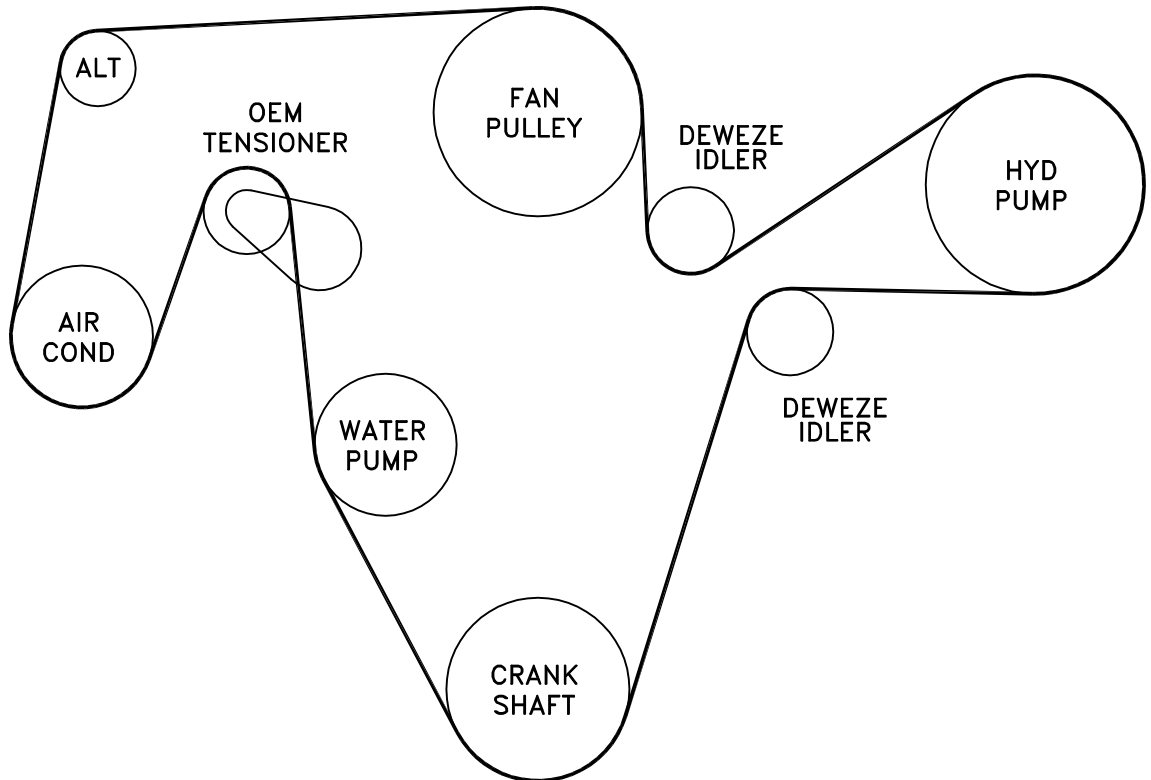


FIG. 4

BELT DIAGRAM



DewEze

Clutch Pump Kit

Clutch Pump Kit
700400
Ford F-650
Ford F-750
with Cat 3126
2002-

INSTALLATION INSTRUCTIONS

1. Disconnect the battery.
2. Remove the intercooler tube. Remove the OEM belt.
3. Disconnect the two fuel lines (Locations R and S) from the fuel filter (19). Remove the two bolts (15) mounting the filter, then remove the filter.
4. Remove the OEM bolts from Locations A through J. Remove the OEM bolt and nut from Location K. Save the bolts from A, B, and C and the nut from K to use again. Remove the OEM filter mounting bracket from the engine.
5. Remove the two nuts (24) holding the oil fill tube (20). Remove the tube. Remove the cap and the top clamp. The clamp will not be needed again. Cut the tube at the top of the straight section just where it starts to bend as shown in Fig. 3. Deburr the cut end. Thoroughly clean the tube. Place the cap on the top of the tube. Place the oil fill tube back in its original location using the OEM nuts (24).
6. Push one idler bushing (4) into one idler (5) and the other idler bushing into the other idler. Mount the idlers to the idler bracket (2) with a 7/16 x 2 1/4 bolt (22) with a 7/16 flat washer (23). Mount the bracket to the engine using three M8 x 50 bolts (10) with M8 flat washers (17) at Location G, H, and I. Place the chain loop for the oil fill cap on the other M8 x 50 bolt and thread this into Location J. Place the M12 x 100 bolt (11) with the OEM nut (25) at Location K.
7. Mount the pump (6) to the pump bracket (1) using 3/8 x 1 1/4 bolts (13) with 3/8 flat washers (21). Place the pump bracket on the engine using the OEM bolts (14) at Locations A, B, and C. Thread the two M8 x 40 bolts (8) into Locations D and F. Thread the M10 x 40 bolt (9) into Location E.
8. Mount the clutch coil (7a) to the pump bracket with four 1/4 x 1/2 flange bolts (7b). Mount the clutch pulley (7c) to the pump shaft with the 5/16 x 1 1/4 bolt (7d) and heavy flat washer (7e) making sure the key is in place on the shaft.
9. Mount the filter mounting plate (3) to the fuel filter (19) with the OEM bolts (15). Loosen, but do not remove, the fittings on the filter at Locations R and S. Loosen, but do not remove, the fuel line R at the engine. Connect line R to the filter. Do not tighten yet. Attach the filter plate with filter to the top edge of the pump plate at Locations N and O with the two 5/16 x 1 bolts (12) and 5/16 lock washers (18). Carefully bend fuel line S until it lines up with fitting S on the filter. Tighten all fittings on the filter and engine. Tighten the bolts.
10. Install the belt (14) as shown in the diagram (Fig. 4).
11. Replace the intercooler tube. Reconnect the battery.
12. Run the engine and check for any clearance or alignment problems. Adjust as needed.