

Bracket Assy.	None
Bolt Packages:	
Bracket	711469 (Inc. items 7, 11-13)
Pulley	None
Idler	None
Tensioner	None

Make	Ford	
Engine	6.0L	
Fuel	Diesel	
Year	2003 Only	
Equipment	Turbo, w/ and w/o A/C	
Revised	D	1-26-06

Item	Part No.	Description
------	----------	-------------

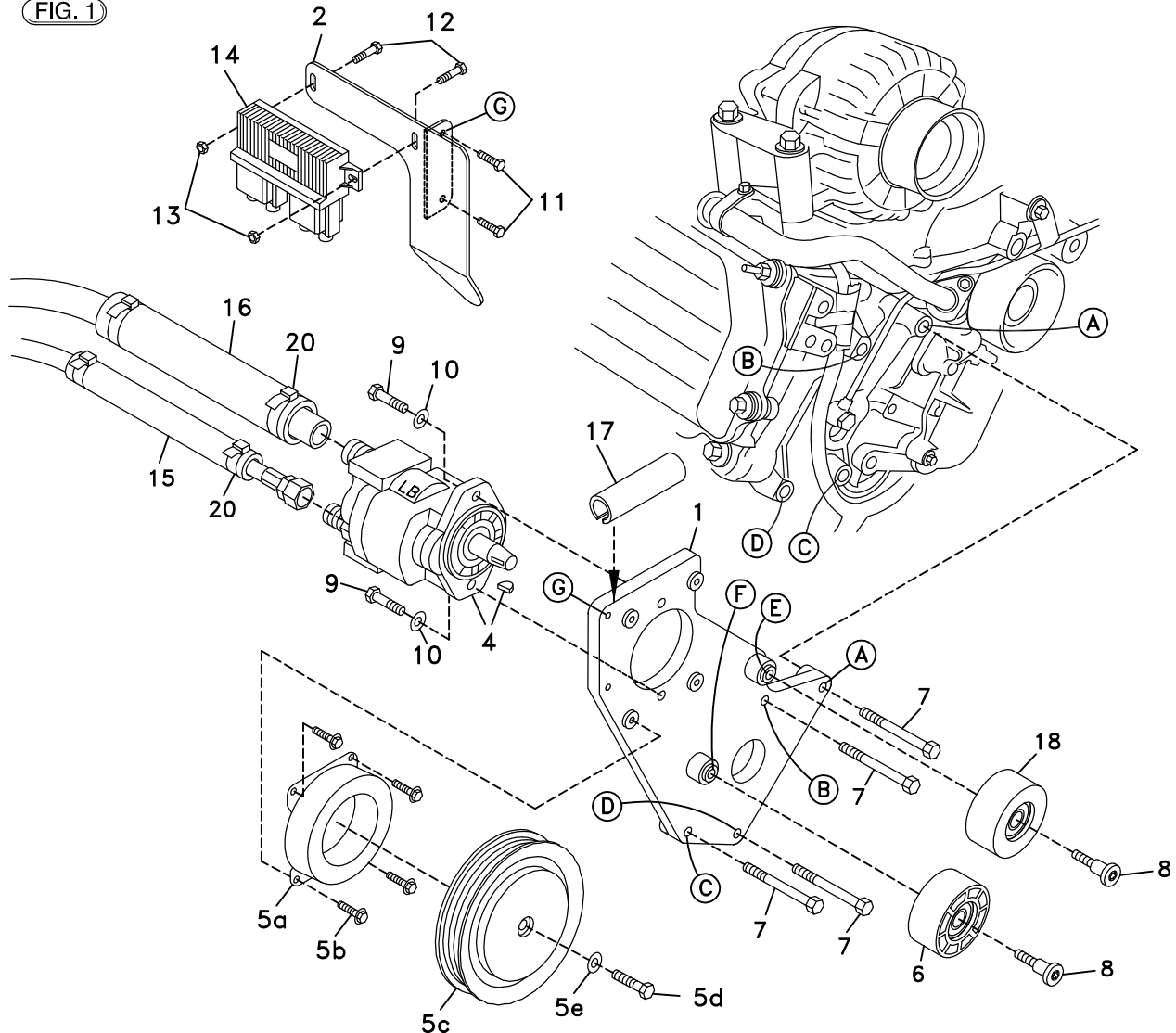
1.	711466	Pump mount bracket	11.	110561	1/4-20 x 3/4 Bolt
2.	715007	Electrical module bracket	12.	110464	1/4-20 x 1 Bolt
3.	700255	Intercooler tube	13.	110609	1/4-20 Nut
4.	*	Pump	14.	OEM	Electrical module
5.	740148	Clutch	15.	**	Insulation, pressure hose
6.	740261	Idler pulley	16.	**	Insulation, suction hose
7.	110488	M10 x 45 x 1.5 Bolt	17.	700261	Hose, intercooler tube rest
8.	110213	M10 x 40 Torx head shoulder bolt	18.	740242	Idler pulley
9.	110425	3/8-16 x 1 1/4 Bolt	19.	740360	Belt, Poly-Cog 1490K8
10.	110676	3/8 Flat washer	20.	100578	Cable tie

* See master list for pump part number

** Hose sizes depend on the pump size. Hose insulation diameter depends on the hose size.

The smaller diameter insulation goes on the pressure hose, and the larger diameter insulation goes on the suction hose.

FIG. 1



(A),(B),(C)... Denotes bolt holes in engine to locate corresponding holes in Pump Brkt.

FIG. 2

COMPONENT PLACEMENT AND MODIFICATION

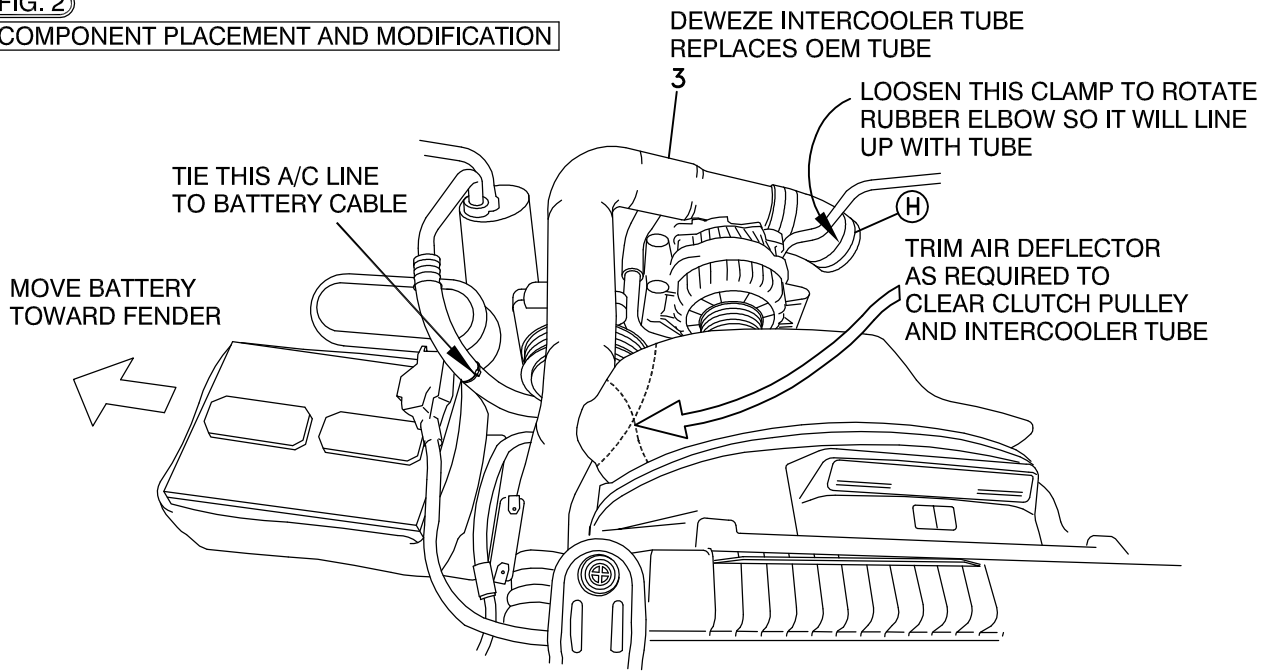
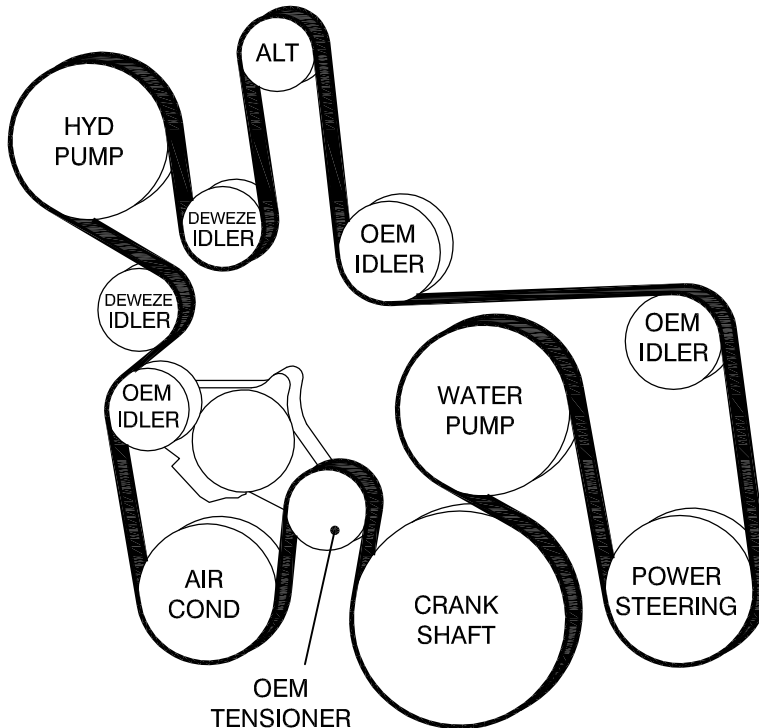


FIG. 3

BELT DIAGRAM



DewEze

Clutch Pump Kit

Clutch Pump Kit
700406
Ford 6.0
Diesel
With A/C
2003-

INSTALLATION INSTRUCTIONS

1. Disconnect the battery.
2. Remove the air deflector shield from the top of the fan shroud.
3. Remove the OEM intercooler tube.
4. Unbolt the electrical module (14) from its mounting bracket on the passenger side valve cover. Keep it plugged in and just move it out of the way for now. Unbolt the mounting bracket. It will not be needed again.
5. Remove the OEM belt. The tensioner has a spring to lock it open without any tension. Remove two bolts mounting the tensioner. Just let it lay against the shroud to allow room to mount the pump bracket.
6. Loosen the battery hold down clamps and slide the battery out toward the fender. Tighten the hold down clamps. Tie the air conditioner line to the positive battery cable running down the rear of the battery. See Fig. 2.
7. Slip the small hose insulation sheath (15) over the pressure hose. Slip the large hose insulation sheath (16) over the suction hose. Place the sheaths where the hoses run close to the exhaust to protect the hoses from the heat. Route the hoses back to the firewall and down running them outside the frame.
8. Mount pump (4) onto bracket (1) with the two 3/8 x 1 1/4 bolts (9) with two 3/8 flat washers (10). Install the adapters into the inlet and outlet ports in back of the pump. Connect the hoses to the pump. Mount the bracket onto the engine with the four M10 x 45 bolts (7). Reattach OEM tensioner with the OEM bolts.
9. Mount the DewEze electrical module bracket (2) onto the front of the pump bracket at Location G with two 1/4 x 3/4 bolts (11). Attach the electrical module (14) to its bracket with two 1/4 x 1 bolts (12) and two 1/4 nuts (13).
10. Mount the 3" dia. slotted-face idler pulley (6) to the boss on the pump bracket at Location F with an M10 x 40 Torx® head shoulder bolt (8). Mount the 2.50" dia. smooth-faced idler (18) to the boss at Location E with an M10 x 40 Torx® head shoulder bolt (8).
11. Mount the clutch coil (5a) to the pump bracket with four 1/4 x 1/2 flange bolts (5b). Mount the clutch pulley (5c) to the pump shaft with the 5/16 x 1 1/4 bolt (5d) and heavy flat washer (5e) making sure the key is in place on the shaft.
12. Install the belt (19) as shown in the diagram (Fig. 3). Release the lock on the tensioner to tighten the belt.
13. Slit the 4" long hose (17) lengthwise in one wall if it is not already slit. Slip the hose over the top of the pump bracket. Install the DewEze intercooler tube (3) into the same location as the OEM tube was. It may be necessary to loosen the hose clamp on the rubber elbow on the turbo (Location H) so the elbow can be rotated to line up with the intercooler tube. Secure the tube with the OEM hose clamps.
14. Hold the deflector shield in place on top of the fan shroud before snapping into place, noting where it contacts the intercooler tube or the clutch pulley. Trim away that portion of the shield. Snap the shield into place making sure it does not make contact. See Fig. 2.
15. Reconnect the battery.
16. Run the engine and check for any clearance or alignment problems. Adjust as needed.