

Bracket Assy.	None
Bolt Packages:	
Bracket	711469 (Inc. item 7)
Pulley	None
Idler	None
Tensioner	None

Make	Ford	
Engine	6.0L	
Fuel	Diesel	
Year	2003-	
Equipment	Turbo, w/ and w/o A/C	
Revised	C	2-24-04

Item	Part No.	Description			
1.	711467	Pump mount bracket	11.	-----	-----
2.	-----	-----	12.	-----	-----
3.	700255	Intercooler tube	13.	-----	-----
4.	*	Pump	14.	-----	-----
5.	740183	Clutch	15.	**	Insulation, pressure hose
6.	740261	Idler pulley	16.	**	Insulation, suction hose
7.	110488	M10 x 45 x 1.5 Bolt	17.	700261	Hose, intercooler tube rest
8.	110213	M10 x 40 Torx head shoulder bolt	18.	740242	Idler pulley
9.	110465	3/8-16 x 1 1/4 Socket head bolt	19.	740360	Belt, Poly-Cog 1490K8
10.	110271	3/8 Lock washer, .55 O.D. x .13 thick			

* See master list for pump part number
 ** Hose sizes depend on the pump size. Hose insulation diameter depends on the hose size.
 The smaller diameter insulation goes on the pressure hose, and the larger diameter insulation goes on the suction hose.

FIG. 1

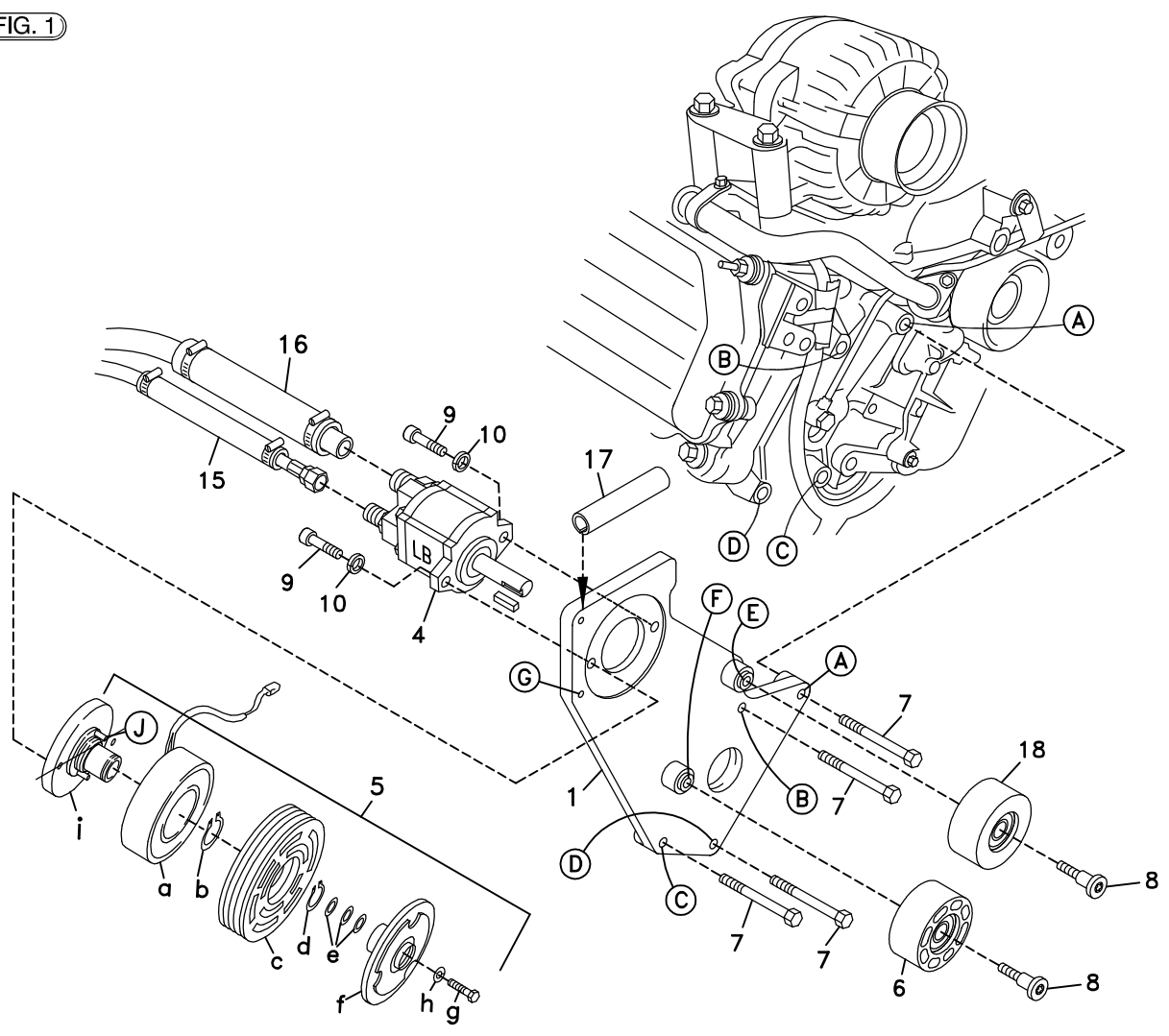


FIG. 2

COMPONENT PLACEMENT AND MODIFICATION

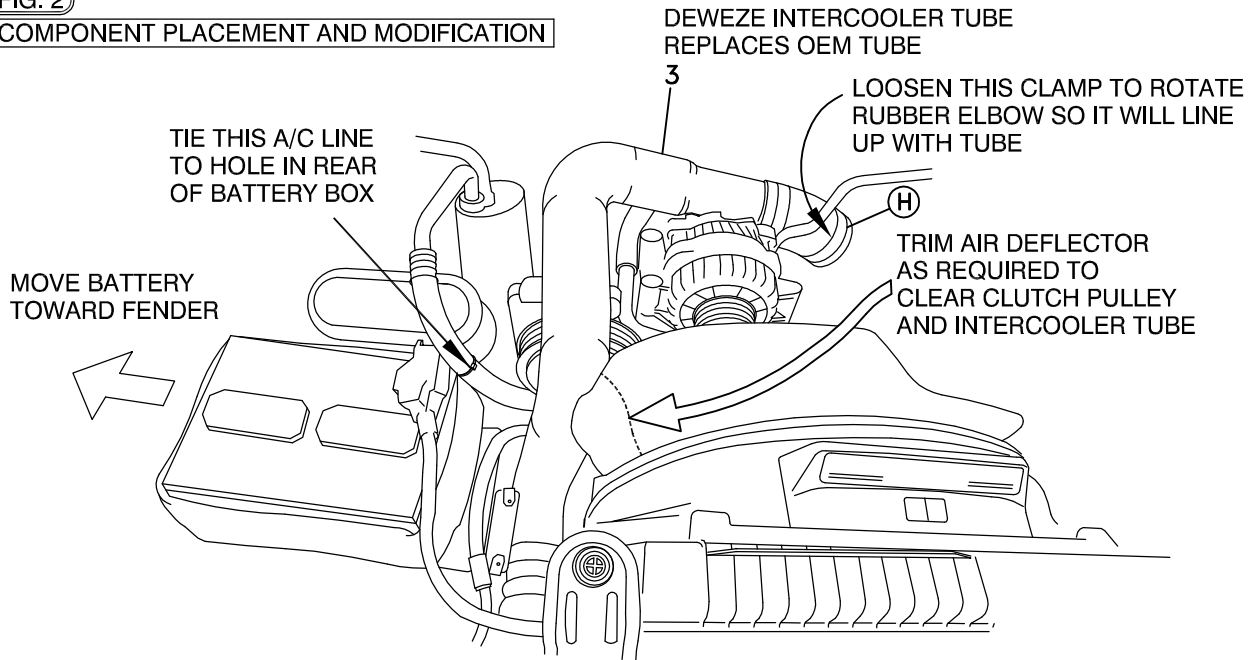
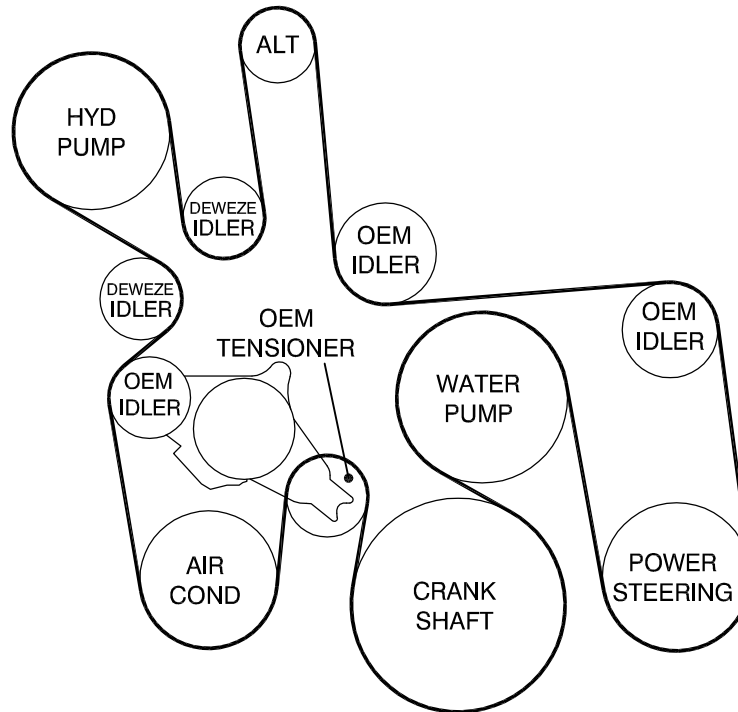


FIG. 3

BELT DIAGRAM



DewEze

Clutch Pump Kit

Clutch Pump Kit
700408
Ford 6.0
Diesel
with & w/o A/C
2003-

INSTALLATION

INSTRUCTIONS

1. Disconnect the battery.
2. Remove the air deflector shield from the top of the fan shroud.
3. Remove the OEM intercooler tube.
4. Remove the OEM belt. The tensioner has a spring to lock it open without any tension. Remove two bolts mounting the tensioner. Just let it lay against the shroud to allow room to mount the pump bracket.
5. Loosen the battery hold down clamps and slide the battery out toward the fender. Tighten the hold down clamps. Tie the air conditioner line to the hole in the rear of the battery box. See Fig. 2.
6. Slip the small hose insulation sheath (15) over the pressure hose. Slip the large hose insulation sheath (16) over the suction hose. Place the sheaths where the hoses run close to the exhaust to protect the hoses from the heat. Route the hoses back to the firewall and down running them outside the frame.
7. Hold pump (4) onto back of mounting plate (1) and clutch hub (5i) onto front of mounting plate, making sure clutch wire and anti-rotation pin (J) on front of hub is pointed outward. Place two 3/8 x 1 1/4 socket head bolts (9) with 3/8 high collar lock washers (10) through pump, through mounting plate and thread into hub.
8. Slide coil (5a) over hub, aligning hole in the back plate of coil with the anti-rotation pin (J) in the hub. The wires from the coil should be on the same side as the pin (J). Install large snap ring (5b) to hold coil in place.
NOTE: THE BEVEL ON BOTH SNAP RINGS MUST FACE AWAY FROM THE PUMP. REFER TO INSTRUCTION SHEET FOR THE CLUTCH FOR CORRECT INSTALLATION OF SNAP RINGS.
9. Slide clutch pulley (5c) onto hub. Install small snap ring (5d) to hold pulley in place.
10. Place the key (4) onto the pump shaft. Slide the hub/armature (5f) onto the pump shaft aligning the keyways.
NOTE: SET THE AIR GAP BETWEEN THE HUB/ARMATURE AND THE PULLEY USING SHIMS (5e) ACCORDING TO INSTRUCTION SHEET FOR CLUTCH.
11. Thread bolt (5g) and lock washer (5h) into pump shaft. Torque to value in clutch instruction sheet.
12. Mount the pump plate with pump to the engine at Location A, B, C, and D with four M10 x 45 bolts (7).
13. Mount the 3" dia. slotted-face idler pulley (6) to the boss on the pump bracket at Location F with an M10 x 40 Torx® head shoulder bolt (8). Mount the 2.50" dia. smooth-faced idler (18) to the boss at Location E with an M10 x 40 Torx® head shoulder bolt (8).
14. Install the belt (19) as shown in the diagram (Fig. 3). Release the lock on the tensioner to tighten the belt.
15. Install the DewEze intercooler tube (3) into the same location as the OEM tube was. It may be necessary to loosen the hose clamp on the rubber elbow on the turbo (Location H) so the elbow can be rotated to line up with the intercooler tube. Secure the tube with the OEM hose clamps.
16. Hold the deflector shield in place on top of the fan shroud before snapping into place, noting where it contacts the intercooler tube or the clutch pulley. Trim away that portion of the shield. Snap the shield into place making sure it does not make contact. See Fig. 2.
17. Reconnect the battery.
18. Run the engine and check for any clearance or alignment problems. Adjust as needed.