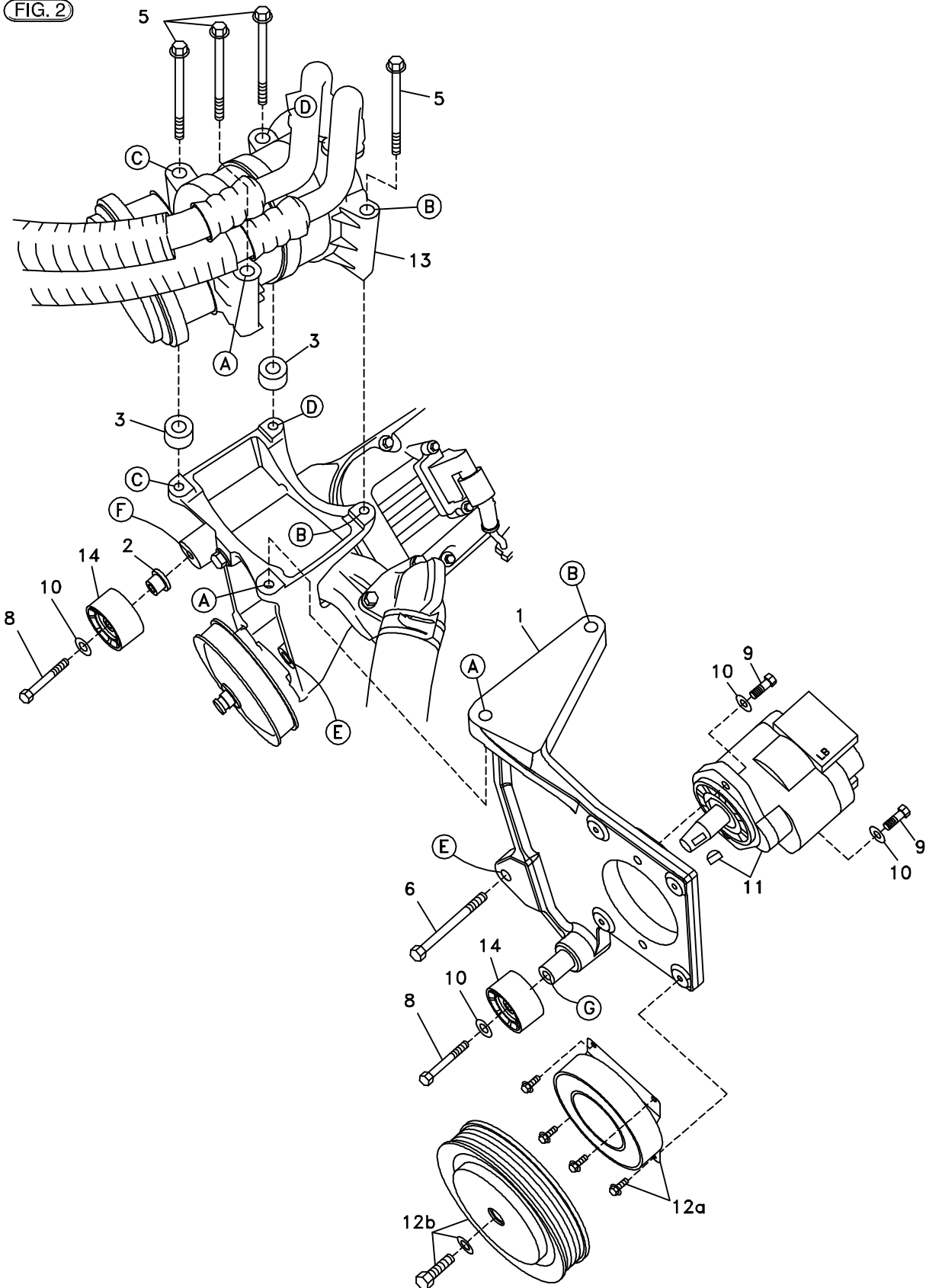


FIG. 2



DewEze

Clutch Pump Kit

Clutch Pump Kit
700415
Chevy 8.1L
Dual Alternator
4500, 5500
2003-

INSTALLATION INSTRUCTIONS

1. Disconnect the battery.
2. Remove the air filter canister to get access to the air conditioner bolts.
3. Remove OEM belt.
4. Remove the OEM bolt from the lower air conditioner bracket at Location E. Remove the four OEM air conditioner compressor bolts. Lift the compressor up and set the .75" spacers (3) on the left side of the air conditioner mounting bracket at Location C and D. Set the compressor down on the spacers and thread two M10 x 100 bolts (5) through the compressor and the spacers and into the A/C mounting bracket. Just start the bolts in - do not tighten yet.
5. Place the top plate of the engine bracket (1) between the A/C bracket and the compressor at Locations A and B. Thread two M10 x 100 bolts (5) here. Tighten all four compressor bolts. Insert the M10 x 140 bolt (6) into the hole at Location E and tighten.
6. Mount the pump (11) to the back of the pump plate (1) with two 3/8 x 1 1/4 bolts (9) and two 3/8 flat washers (10). Attach the clutch coil (12a) to the pump plate with four 1/4 x 1/2 flange bolts. Attach the clutch pulley (12b) with the 5/16 x 1 1/4 bolt with heavy flat washer.
7. Place a 3/8 flat washer (10) on one of the M10 x 45 bolt (8) and insert it through one of the idler pulleys (14) threading it into the boss at Location G.
8. Insert the idler bushing (2) into the other idler pulley (14). Place a 3/8 flat washer (10) on the M10 x 45 bolt (8) and insert through the front of the idler threading it into the hole at Location F.
9. Install the belt (15) as shown in the diagram (Fig. 1).
10. Run the engine and check for any clearance or alignment problems. Adjust as needed.