



Clutch Pump Kit 700441

Chevy/GMC 6500, 7500 w/Cat 3126 :D, 2005+, A Pump, Rear Port

Bolt Packages:

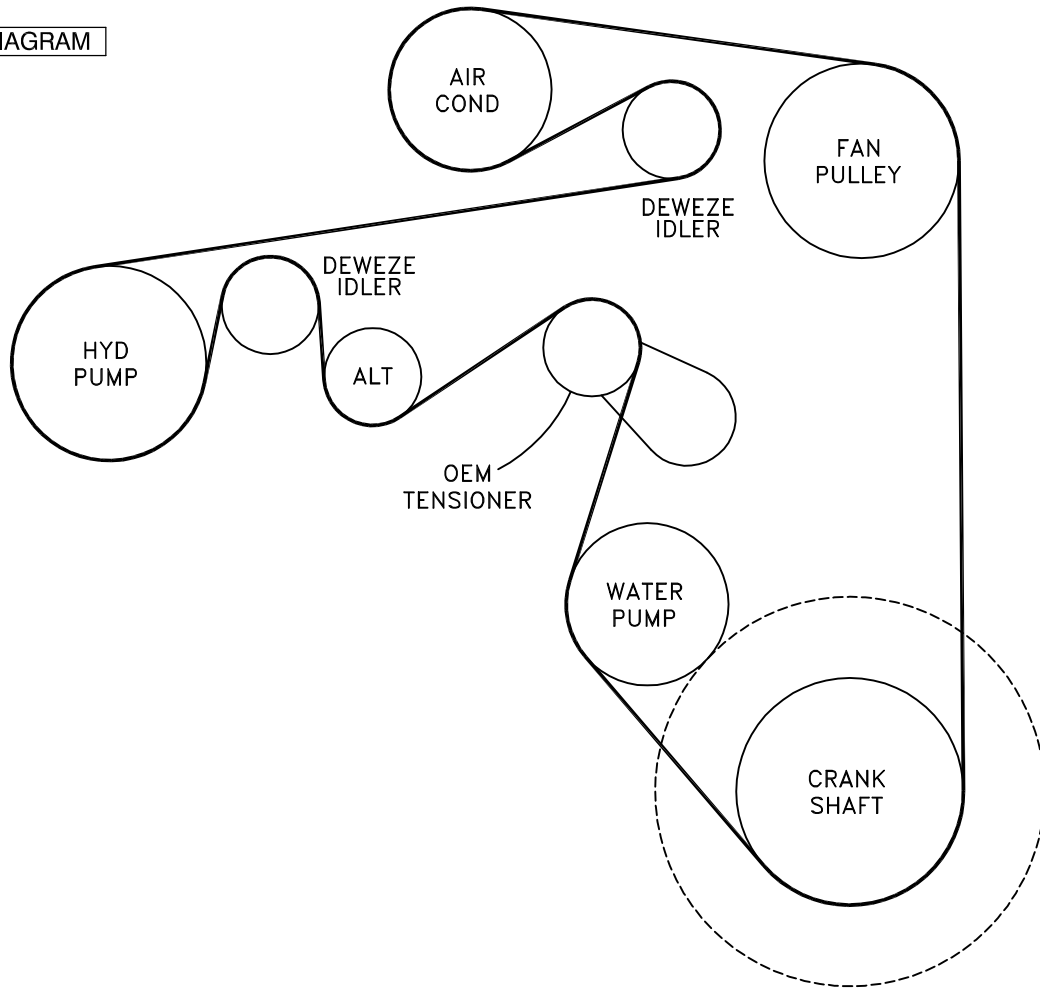
Bracket	711702	(Inc. item 14-18, 21-23)
Idler	711703	(Inc. item 4, 5, 16, 19, 20,)
Crank pulley	None	
Tensioner	None	

Bracket Assy.	711701	(Inc. items 1-3)
Issue Date	4-25-05	Revision Date NC 4-25-05

Item	Part No.	Description
1.	711697	Pump plate mount
2.	711698	Alternator bracket
3.	711699	Block, Tensioner mount
4.	711700	Idler bushing, .400"
5.	711641	Idler bushing, .500"
6.	711216	Foot mount, pump
7.	740339	Idler, 2.00" dia.
8.	740242	Idler, 2.50" dia.
9.	*	Pump
10.	742009	Clutch
11.	120401	Adapter, 16-16FJX90
12.	720107	Hose clamp
13.	700279	1.00" Heater hose, 77" long
14.	110465	3/8-16 x 1 1/4 Socket head bolt
15.	110072	M10 x 1.5 x 150 Bolt
16.	110676	3/8 Flat washer
17.	110672	3/8 Lock washer
18.	110425	3/8-16 x 1 1/4 Bolt
19.	110705	M10 x 1.5 x 55 Bolt
20.	110180	M10 x 1.5 x 60 Bolt
21.	110701	M12 x 1.75 x 100 Bolt
22.	110670	7/16 Flat washer
23.	711704	Spacer, 2.075"
24.	740322	Belt, Poly Cog 5081223BK

* See pump list for sizes and part numbers.

FIG. 1
BELT DIAGRAM



(A), (B), (C)... Denotes bolt holes in engine to locate corresponding holes in Pump Brkt.

FIG. 2

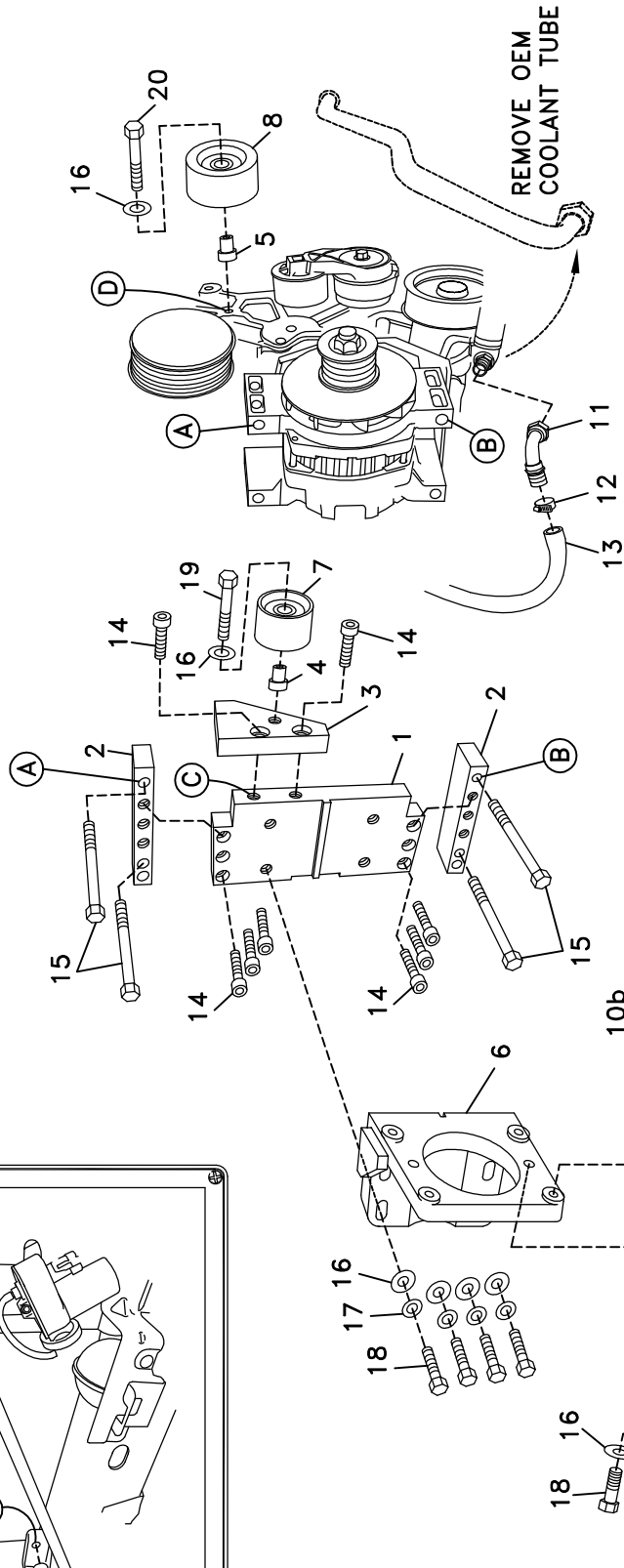


FIG. 4

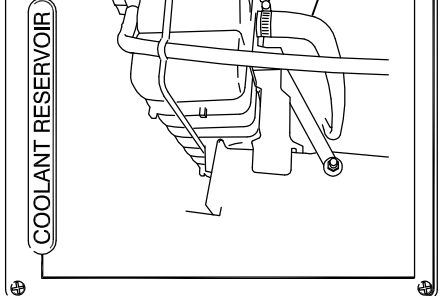
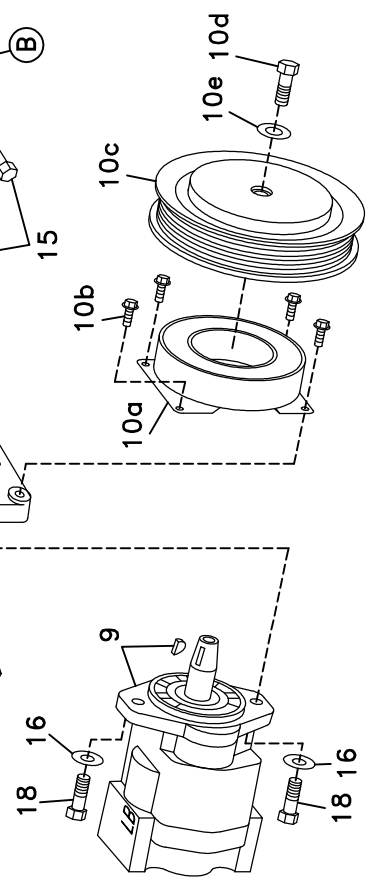
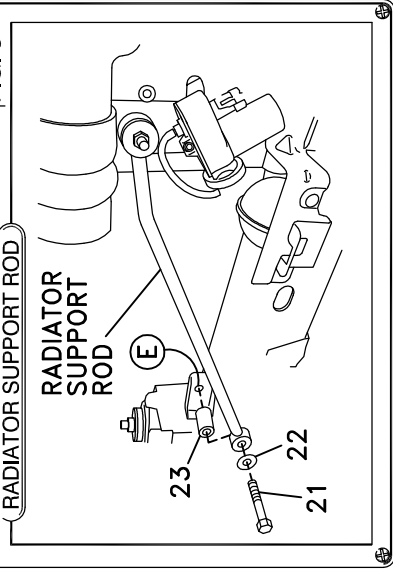


FIG. 3



DewEze

Clutch Pump Kit

Clutch Pump Kit
700441
Chevy/GMC
6500/7500
Cat 3126
'A' mount
2005+

INSTALLATION INSTRUCTIONS

1. Disconnect the battery.
2. Remove the passenger side inner fender.
3. Remove the bolt from the radiator support rod where it is attached to the frame at Location E. See Fig. 3. Pull the rod away from the bracket and insert the 2" long spacer (23) between the rod end and the bracket. Fasten rod in place with the M12 x 100 bolt (21) and the 7/16 flat washer (22). This is to give clearance between the rod and the pump.
4. Drain the engine coolant. Remove the OEM coolant tube from the engine block below the alternator and also the hose running to the overflow tank on the driver's side. Thread the hose adapter (11) onto the engine, pointing it to the rear as shown in Fig. 2. Slip the 1.00" heater hose (13) and the hose clamp (12) onto the adapter. Run the hose behind the alternator, up on top of the engine, and connect to the overflow tank using the other hose clamp as in Fig. 4.
5. Attach the alternator brackets (2) to the upper and lower alternator at Locations A and B with four M10 x 150 bolts (15). Note the orientation of the brackets: The single untapped hole goes toward the front and the two untapped holes together go toward the rear. The farthest rear hole is not used.
6. Attach the base plate (1) to the alternator brackets at the upper and lower three tapped holes with six 3/8 x 1 1/4 socket head bolts (14).
7. Attach the tensioner block (3) to the front edge of the base plate with two 3/8 x 1 1/4 socket head bolts (14).
8. Insert the idler bushing (4) with the .400" long flange into the 2.00" dia. idler (7) and attach it to the tensioner block with the M10 x 55 bolt (19) and a 3/8 flat washer (16).
9. Insert the idler bushing (5) with the .500" long flange into the 2.50" dia. idler (8) and attach it to the front of the engine at Location D with the M10 x 60 bolt (20) and a 3/8 flat washer (16).
10. Attach the pump footmount (6) to the base plate with four 3/8 x 1 1/4 bolts (18), four 3/8 lock washers (17), and four 3/8 flat washers (16). Attach the pump (9) to the footmount with two 3/8 x 1 1/4 bolts (18) with two 3/8 flat washers (16).
11. Mount the clutch coil (10a) with the four 1/4 x 1/2 flange head bolts (10b) provided with the clutch. Mount the clutch pulley (10c) with the 5/16 x 1 1/4 bolt (10d) and heavy flat washer (10e) provided with the clutch.
12. Put the belt (24) in place on the pulleys.
13. Replace the inner fender.
14. Reconnect the battery.
15. Run the engine and check for any clearance or alignment problems. Adjust as needed.