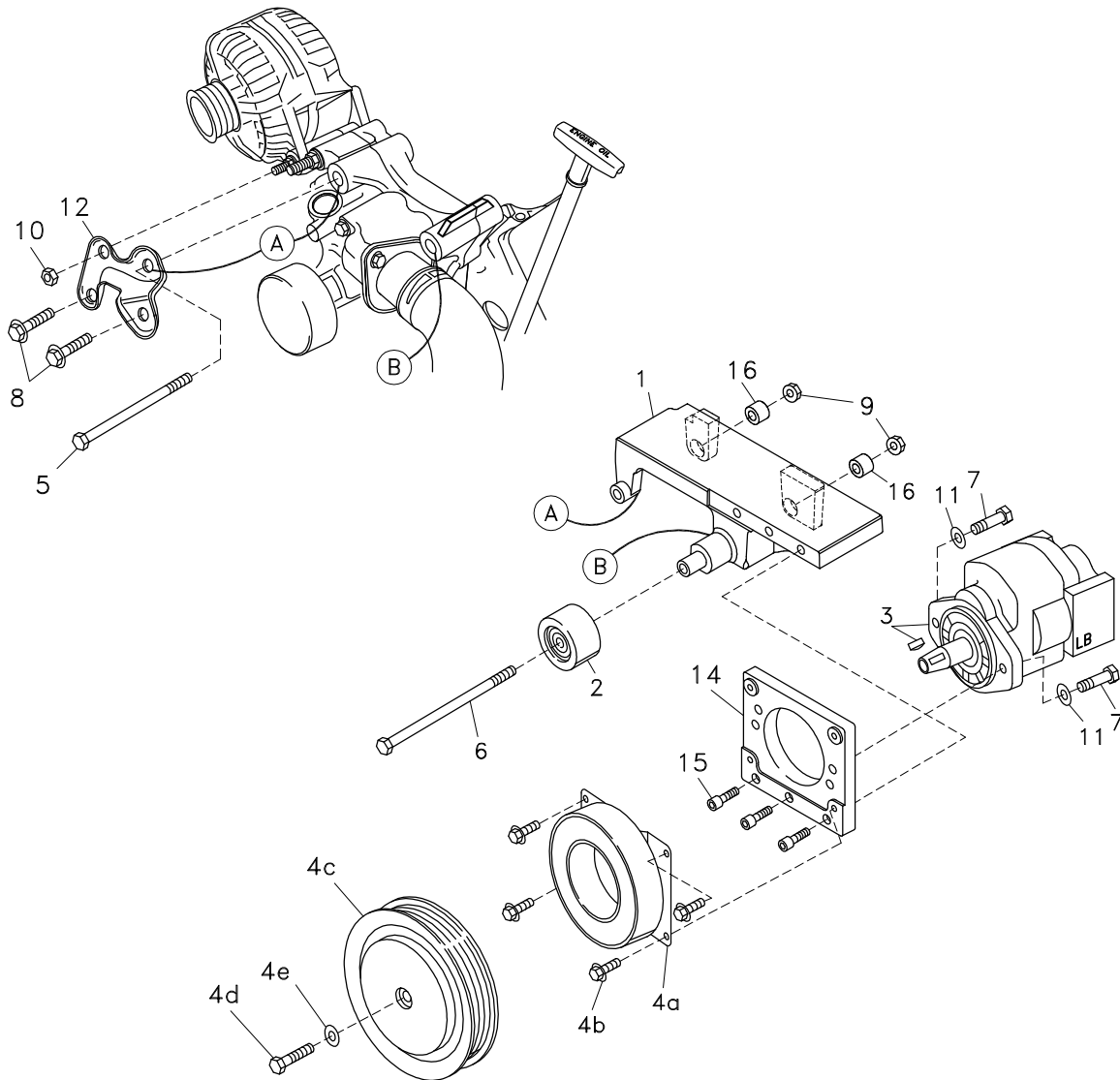


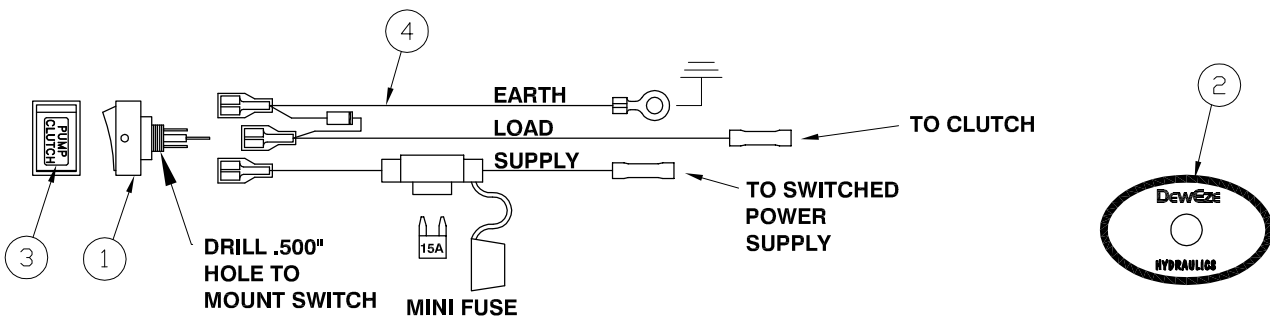
FIG. 2



CLUTCH CONTROL SWITCH (735001 Assembly)

FIG. 3

Item	Part No.	Description
1	132017	SWITCH, SPST ILLUM. ROCKER
2	702002	DECAL, DEWEZE HYDRAULICS
3	702003	DECAL, PUMP CLUTCH
4	732002	HARNES, CLUTCH CONTROL



DEWEZE Clutch Pump Kit 700456

Dodge 5.7L Hemi without A/C 2006+

INSTALLATION INSTRUCTIONS

1. The installation of this kit requires trained decision-making concerning clearances, tying components together, rerouting, or relocating OEM components, etc. It is impossible to describe all of the clearance and vibration points, etc. in the installation instructions. Therefore, the technician must exercise professional judgment to achieve the best quality installation.
2. Disconnect the battery.
3. Remove the OEM belt.
4. Remove the two OEM bolts (8) and two OEM nuts (10) holding the OEM bracket (12) in place. Remove the bracket. Remove the OEM stud bolt at Location A. It will not be reused.
5. Place the two bushings (16) into the holes at the rear of Locations A and B on the pump bracket (1). Drop the pump bracket (1) into place at Locations A and B. Slide the idler (2) onto the boss at Location B, push the M10 x 180 bolt (6) into the idler and through the bracket, fastening at the rear with a M10 nut (9).
6. Reattach the OEM bracket (12) to its original location with the top left hole on the alternator bolt. Fasten at Location A with the M10 x 150 bolt (5) with the M10 nut (9) at the rear. Replace the bottom two OEM bolts (8).
7. Mount the pump (3) to the back of the pump plate (14) with two 3/8 x 1 1/4 bolts (7) and two 3/8 flat washers (11). Mount the pump plate to the base plate with three 3/8 x 1 1/4 socket head bolts (15).
8. Mount the clutch coil (4a) to the pump bracket with four 1/4 x 1/2 flange bolts (4b). Mount the clutch pulley (4c) to the pump shaft with the 5/16 x 1 1/4 bolt (4d) and heavy flat washer (4e) making sure the key is in place on the shaft.
9. Install the belt (21) as shown in the diagram (Fig. 1).
10. Reconnect the battery.
11. Run the engine and check for any clearance or alignment problems. Adjust as needed.