

Sprinter, 3.0L:D, 2008+, A Pump, 5-17 GPM, Rear Port

Bolt Packages:

Bracket	711899 (Inc. items 5-8)
Idler pulley	None
Pulley	None
Tensioner	None

Issue Date	10-3-07	Revision Date	NC 10-3-07
------------	---------	---------------	------------

Item	Part No.	Description
1.	711898	Pump plate
2.	740350	Idler pulley
3.	*	Pump, A rear port
4.	742016	Clutch
5.	110171	M10 x 1.5 x 110 Socket head bolt
6.	110155	3/8 Flat washer, .81 O.D.
7.	110689	M10 Lock washer
8.	110640	M10 x 1.5 Nut
9.	110425	3/8-16 x 1 1/4 Bolt
10.	110676	3/8 Flat washer, 1.00 O.D.
11.	OEM	Idler Bolt
12.	742060	Belt, Micro-V K060578

* See pump list for sizes and part numbers.

FIG. 1

IDLER REPLACEMENT

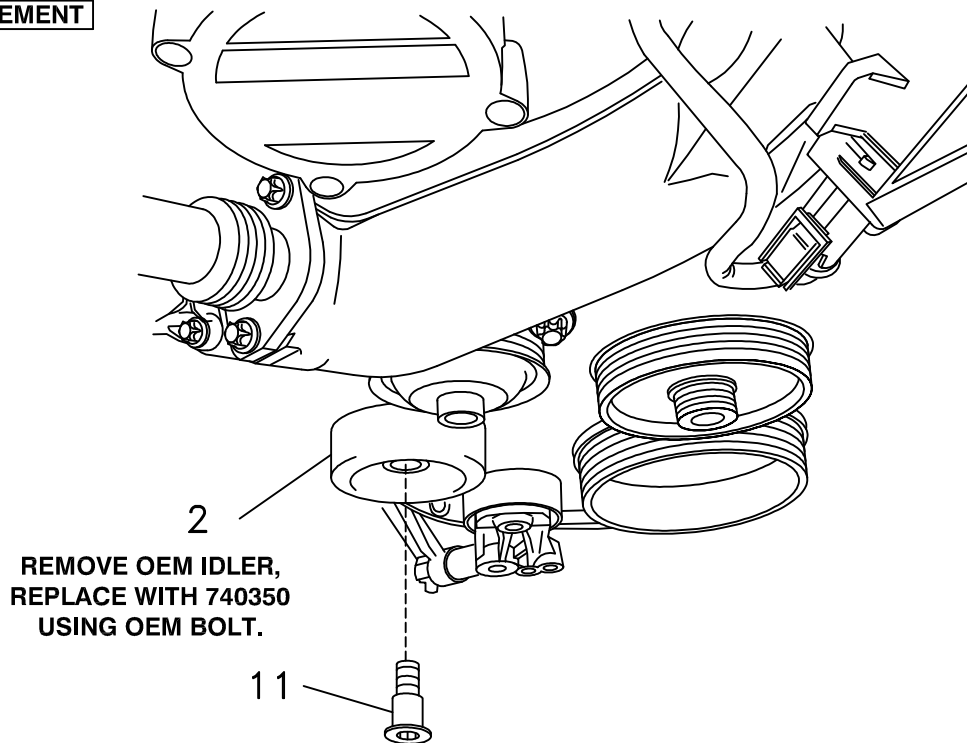


FIG. 3
BELT DIAGRAM

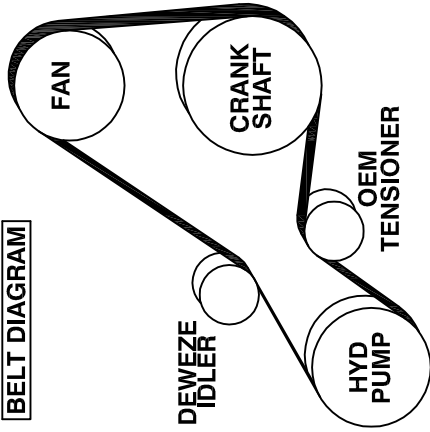
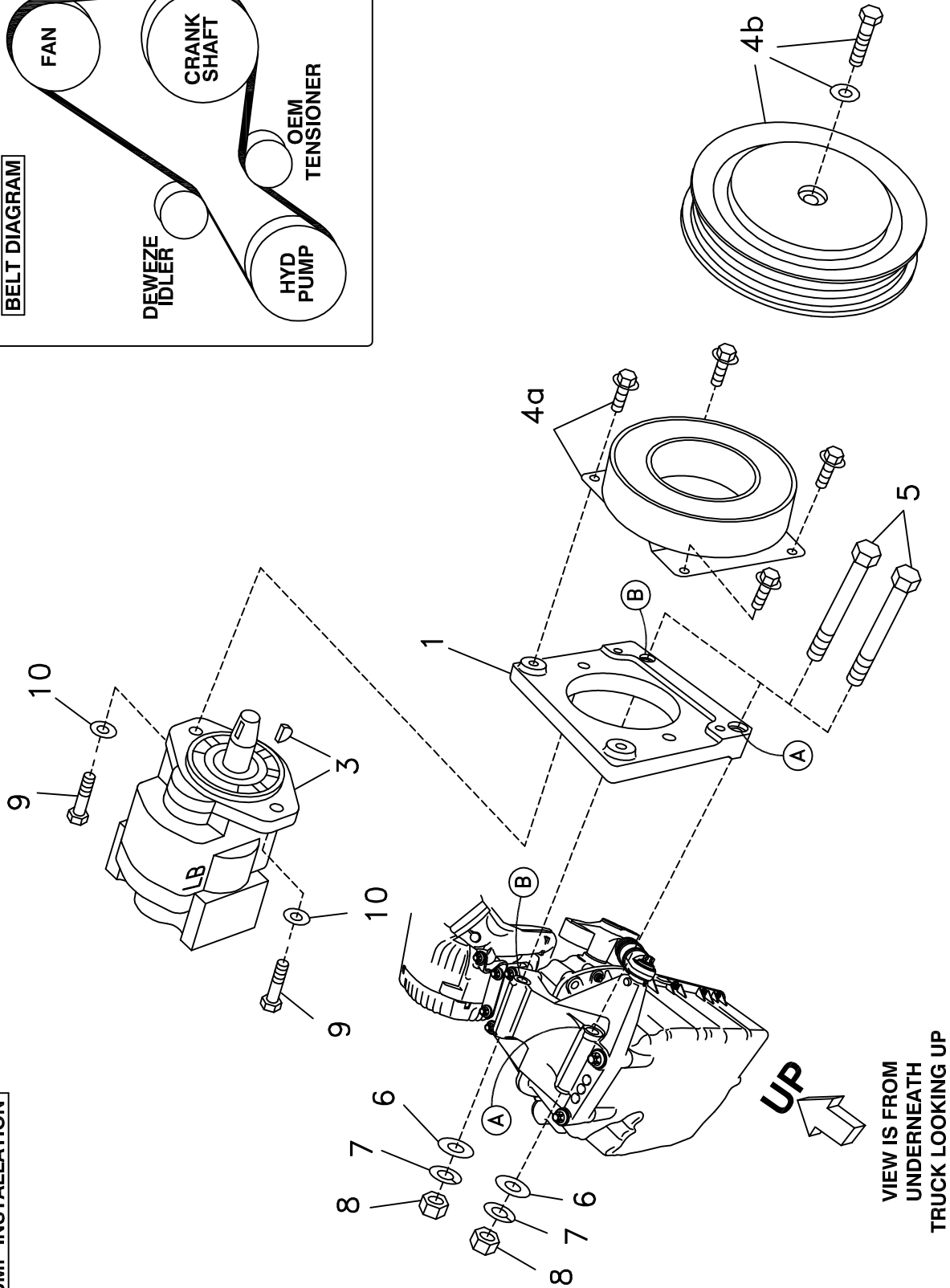


FIG. 2
PUMP INSTALLATION



DewEZE Clutch Pump Kit 700477

Sprinter 3.0L, A Pump, 2008+

INSTALLATION INSTRUCTIONS

1. The installation of this kit requires trained decision-making concerning clearances, tying components together, rerouting, or relocating OEM components, etc. It is impossible to describe all of the clearance and vibration points, etc. in the installation instructions. Therefore, the technician must exercise professional judgment to achieve the best quality installation.
2. Disconnect the battery.
3. Remove the fan shroud and fan. The fan is left hand thread.
4. Remove the front OEM belt from the crank to the fan. The belt is tight as there is no tensioner.
5. Remove the OEM idler as shown in Fig. 1. Replace it with the DewEze idler (2), fastening with the OEM bolt (11).
6. Attach the pump plate (1) to the engine at Locations A and B using two M10 x 110 bolts (5), two small (.81" O.D.) 3/8 flat washers (6), two M10 lock washers (7), and two M10 nuts (8).
7. Attach the pump (7) to the back of the footmount (2) using two large (1.00" O.D.) 3/8 x 1 1/4 bolts (11) and two 3/8 flat washers (10).
8. Attach the clutch coil (8a) to the front of the pump plate using the four 1/4 x 1/2 flange bolts provided with the clutch. Attach the clutch pulley (8b) to the pump shaft using the 5/16 x 1 1/4 bolt and heavy flat washer provided with the clutch.
9. Install the new belt (12) as shown in Fig. 3.
10. Connect the battery.
11. Make sure all bolts are tight. Run the engine and check for any clearance or alignment problems. Adjust as needed.